



<http://kentarchaeology.org.uk/research/archaeologia-cantiana/>

Kent Archaeological Society is a registered charity number 223382

© 2017 Kent Archaeological Society

CATALOGUE

OF THE

KENT ARCHÆOLOGICAL SOCIETY'S COLLECTIONS AT MAIDSTONE.

BY

GEORGE PAYNE, F.L.S., F.S.A.,

HONORARY SECRETARY AND CHIEF CURATOR.

LONDON :

MITCHELL AND HUGHES, 140 WARDOUR STREET, W.

1892.

CATALOGUE

OF THE

Kent Archaeological Society's Collections at Maidstone.

INTRODUCTION.

THE Museum of the Kent Archæological Society was commenced in the year 1859, the Collection of Antiquities presented to the Society by the late William Bland, Esq., of Hartlip, forming the nucleus of it. Since that time it has been enriched by donations from various gentlemen, whose names will be found mentioned in the Catalogue. The Society's researches and explorations, in the eastern portion of the county, have yielded a vast number of important remains, all of which have been deposited in the Museum through the liberality of those on whose lands the objects were discovered. The British or Pre-Roman period is represented by a magnificent series of gold armillæ and torques in the highest state of preservation; also a small collection of early gold coins. Among the remains of the Romano-British period, special attention must be drawn to the fragments of a bronze statue found at Richborough; these have hitherto escaped observation. The intaglio from Rochester is rare and curious, and the fragment of embossed glass from Hartlip is an interesting example of ancient art. A descriptive account of all these rarities is given in the Catalogue. The Anglo-Saxon period is thoroughly representative, and takes rank with the celebrated "Faussett" and "Gibbs" Collections, which are now, respectively, in the Liverpool and South Kensington Museums. From want of space, and other causes, the majority of the objects in this department have not been exhibited, but now, by the con-

sideration of the Council, all obstacles have been removed. New cases have been provided, and every article the Society possesses is conveniently displayed, and rendered accessible to Students and the Members generally. The Catalogue forms a complete inventory of the Collection, each object is numbered, and can be readily identified. The work of classification, arrangement, and cataloguing, although highly interesting and instructive, has been clouded by the remembrance that, with one or two exceptions, all those whose time and talents have been so freely expended in the formation of the Collection have passed away. By taking due care of it, the Society pays a just tribute to the memory of Lambert Larking, Edward Pretty, T. G. Godfrey-Faussett, W. J. Lightfoot, and John Brent.

GEORGE PAYNE.

FLINT IMPLEMENTS.

Presented, January 1892, by JOHN MARTEN, Esq., of Dunkirk, near Faversham, unless otherwise stated.

PALÆOLITHIC PERIOD.

- 1 Celt, $6\frac{1}{2}$ in. in length, from Mountsford Bower, Chartham.
- 2 Celt, 7 in. " from Eight Acres, Chilham.
- 3 Celt, 6 in. " from Shiverals, Chilham.
- 4 Celt, 5 in. " from Meadfield, Chartham.
- 5 Celt, $6\frac{1}{4}$ in. " from Barn Field, Nickle, Chartham.
- 6 Celt, 5 in. " from Skrigles, Chilham.
- 7 Celt, $5\frac{1}{2}$ in. " from Mountsford Bower, Chartham.
- 8 Celt, broken, from Lambs Lay, Chartham.
- 9 Celt, $4\frac{1}{2}$ in. in length, from Pigeon House Field, Petham.
- 10 Celt, $4\frac{1}{4}$ in. " from Chartham.
- 11 Celt, $4\frac{1}{2}$ in. " from Profits, Chilham.
- 12 Celt, 5 in. " from Seal Chart. Donor, Mr. B. Harrison.
- 13 Celt, broken, from Bower, Chartham.
- 14 Celt, 4 in. oval, from Profits, Chilham.
- 15 Celt, a very fine specimen; the point is broken, but when perfect it measured about 7 in. in length; from Craftye, Chilham.
- 16 Celt, a fine example, 8 in. oval, from Oldbury Camp, Ightham. Donor, Mr. B. Harrison.
- 17 Celt, $5\frac{1}{2}$ in. oval, from Mountsford Valley, Chilham.
- 18 Celt, 6 in. in length, imperfect at the butt.
- 19 Celt, $3\frac{3}{4}$ in. " from Wincheap, Canterbury.

NEOLITHIC PERIOD.

- 20 Celt, $5\frac{1}{4}$ in. in length, from Shalmsford Street, Chartham.
- 21 Portion of Celt, from Mountsford Valley, Chilham.
- 22 Celt, 4 in. in length, from Seal Chart. Donor, Mr. B. Harrison.
- 23 Portion of Spear-head, from the shore, East Wear Bay, Folkestone. Donor, Miss L. Bigge.
- 24 Sundry Flakes and partially worked flint, from Chilham district.
- 25 Sundry Flakes and worked flints, from Gaskin's brickfield, Sturry Road, Canterbury.
- 26 Celt, 7 in. in length, from Hartlip. Donor, W. Bland, Esq.

BRONZE PERIOD.

- 27 Celt, $5\frac{1}{4}$ in. in length, from Medway Brass Works. Donor, Mr. Battely.

PRE-ROMAN PERIOD.

GOLD ORNAMENTS.

- A Armilla, made from a strip of gold, cut and hammered out in the rudest manner, then bent to the size of the wrist. Weight 2 oz. 2 dwt. 3 gr.
- B Armilla, of better finish and burnished, slightly ornamented at the ends. Weight 2 oz. 2 dwt. 9 gr.
- C Armilla, highly finished and ornamented with lines and the Vandyke pattern, flat on the inside and convex on the outside. Weight 2 oz. 11 dwt. 19 gr.
- D Trumpet-shaped ornament, which is probably the half of the fastening to a cloak, similar to examples found in Ireland. Weight 1 oz. 10 dwt. 2 gr.

The above four articles are of solid gold, and were stated to have been found in a box discovered in the Medway, below Aylesford, in 1861. They were obtained by the late Edward Pretty, Esq., F.S.A., and subsequently purchased by the Society.

- E Torquis of twisted gold, with plain ends. Length 16 inches. Weight 4 oz. 17 dwt. 19 gr.
- F Torquis (portion of). It appears to have been broken by the owner, the missing portion was possibly disposed of for purposes of barter. It is ornamented with diagonal lines. Length $6\frac{1}{2}$ in., girth $1\frac{1}{2}$ in. Weight 5 oz. 17 dwt. 12 gr.
- G Torquis of twisted gold with plain ends. Length 15 in. Weight 5 oz. 1 dwt. 8 gr.
- H Armillæ (a pair), flat on the inside and convex on the outside. Length of one $6\frac{3}{4}$ in., girth $1\frac{1}{2}$ in., width $\frac{1}{2}$ in. Weight 4 oz. 4 dwt. 16 gr.

I Armilla, quadrilateral. Length 8 in., girth $\frac{3}{4}$ in. Weight 2 oz. 16 dwt. 17 gr.

J Armilla, quadrilateral. Length 8 in., girth $1\frac{1}{2}$ in. Weight 4 oz. 0 dwt. 8 gr.

E to J were also found in the Medway, near Aylesford, and purchased by the Society.

For a full account of these and other ornaments of a similar nature, reference should be made to *Archæologia Cantiana*, Vols. V., p. 41; IX., p. 1.

These ornaments, together with the gold British coins discovered at Ryarsh (see below), and the Anglo-Saxon gold bracteates found at Sarre* (see p. 18) and Bifrons† (see pp. 32, 33), have been carefully mounted in a cabinet, which is deposited for safety in Messrs. Wigan, Mercer, and Co.'s Bank at Maidstone, and may be seen by special arrangement with the Honorary Secretary of the Society.

BRITISH COINS.

PRESENTED TO THE SOCIETY BY THE LATE REV. LAMBERT LARKING, ITS FIRST HONORARY SECRETARY.

These coins are all of very early types, and each bears upon its concave side the rude figure or disjointed representation of a horse. They are preserved, with the golden armillæ (*vide* p. 5), in a cabinet deposited at Messrs. Wigan, Mercer, and Co.'s Bank in Maidstone.

- 1 From Golden Field, Woodgates at Aldons.
- 2 From Golden Field, Durrell's, late Woodgates.
- 3 From Sloping Field, on Claygate Farm (Henry Fremlin's).
- 4 From Stony Stile Field, on Palmer's Farm, behind Mr. Seager's Farmyard, St. Leonard's Street, West Malling.
- 5 From Pond Field, on Palmer's Farm, not far from Woodgates Windmill, in the field where the footpath is, about one field apart from that where No. 4 was found.
- 6 From Chequers Lane, Offham, near the Golden Hop-garden in Ryarsh.
- 7 From Chequers Field, very near No. 6.
- 8 From Chequers Lane Hop-garden, same place as No. 6.
- 9 From Canterbury. Donor, T. G. Godfrey-Faussett, Esq.
- 10 From Birchington (Cunobeline). Donor, Captain Bird.

* *Arch. Cant.*, Vols. V., p. 314, plate i.; VI., p. 173.

† *Ibid.*, Vols. III., p. 196; X., p. 310.

ROMAN COINS.

FROM THE BLAND COLLECTION (*vide* Case B).

These coins are much worn from long circulation, and were found on the site of the Roman villa discovered in the southern part of the parish of Hartlip. Mr. Roach Smith thus refers to them:* "The coins discovered on the site of the villa are not very numerous, and call for no remark as to rarity of type. They are of Claudius, Nero, Vespasian, Hadrian, Pius, Gallienus, Tetricus, Carausius, Allectus, the Constantine family, Valens, and Honorius. Of the earlier emperors there are only one or two specimens of each; but there are several of those of the lower empire. They shew that the buildings were occupied up to the latest period of the Roman rule in Britain."

36 ROMAN COINS FOUND AT RICHBOROUGH,
During the Society's researches within the *Castrum*.

The following is the late Mr. Roach Smith's description of them:—

- 1 A large brass of VESPASIAN (struck by Titus), with the Emperor in a car drawn by four elephants with drivers: above ^{DIVO} VESP. Rare; but much worn by circulation.
- 1 Denarius of PHILIP the ELDER. *Rev.*, "Felicitas Temp."
- 1 Third brass of CARAUSIUS. *Rev.*, "Pax. Aug."
- 15 CONSTANTINE Family.
- 1 TETRICUS the ELDER. *Rev.*, "Salus Aug."
- 1 VALENS.
- 16 Minimi of the reigns of the TETRICI and CONSTANTINE, and not late or post-Roman, as formerly supposed.

CASE A.—ROMANO-BRITISH PERIOD.

- 1 Portion of large Cinerary Urn, red, from *Hermitage Wood, East Malling*.
- 2 Urn of Upchurch ware, 8 inches high. Found when constructing the glacis of *Fort Darnet*, in a marsh next *Yantlet Spit*. Donor, Lieut. J. R. Hogg, R.E.
- 3 Cinerary Urn, brown, 8¼ in. high. From *Woodcote*. Donor, R. Rugg, Esq.
- 4 Rim of a Mortarium, stamped of CACVMA. Old Cemetery, *Boulogne-sur-Mer*. Donor, Major Luard.
- 5 Cinerary Urn, with two handles, red, 9 in. high. Donor, Rev. J. C. B. Riddell, rector of *Harrietsham*.
- 5A Cinerary Urn, black, contains bones. Found, like 5, in *Harrietsham Churchyard*. Same donor.

* *Collectanea Antiqua*, vol. ii., p. 22.

- 6 Cinerary Urn, red brown, $13\frac{1}{2}$ in. high, contains bones. Locality unknown.
- 7 Portion of Cinerary Urn, red.
- 8 Cinerary Urn, red brown, contains bones. $11\frac{1}{2}$ in. high.
- 9 Cinerary Urn, red brown, $9\frac{1}{2}$ in.
- Nos. 7—9 came from Sundridge, near Sevenoaks. Donor, the late Earl Amherst.
- 10 Cinerary Urn, black, $5\frac{3}{4}$ in. high, contains bones. Locality unknown.
- 11 Cinerary Urn, $6\frac{1}{2}$ in. high, black, contains bones. Locality unknown.
- 12 Cinerary Urn, red brown. Vicarage garden, *Chart Sutton*. Donor, E. Hughes, Esq.
- 13 Cinerary Urn, red, contained bones. 20 in. high; greatest diameter $17\frac{3}{4}$ in. Found beneath the floor of the nave of Boxley Church during the restoration in 1857.
- 14 Urn Vase,* brown, height 3 in.
- 15 Vase, black, height 3 in.
- 16 Vase, black, height $3\frac{1}{2}$ in.
- 17 Vase, red, height 3 in.
- 18 Vase, brown, height $3\frac{1}{2}$ in.
- 19 Vase, black. } Found by the hands of a skeleton, one on
- 20 Vase, black. } each side. Height $3\frac{1}{2}$ in.
- 21 Vase, black, height $2\frac{1}{2}$ in.
- 22 Goblet, with handle, flesh coloured, height 8 in.
- 23 Goblet, with handle, flesh coloured, height $9\frac{1}{2}$ in.
- 24 Samian Bowl, with projecting rim, height 3 in., diam. 6 in.
- 25 Samian Cup, ornamented with leaf pattern, height 2 in., diam. $4\frac{1}{4}$ in.
- 26 Samian Bowl, height $2\frac{1}{2}$ in., diam. $8\frac{1}{2}$ in. Found on the shoulder of a skeleton.
- 27 Necks of four Goblets, each of which possessed handles; two red, one cream coloured, one flesh coloured.
- Nos. 14—27 were found in the "Hundred's" brickfield west of *Margate* 1865 to 1868. Donor, Lieut. Clayton, R.N.
- 28 Lump of Bronze from the smelting pot. Found in the "Twenty's" brickfield, near Shottendean, *Margate*. Donor, Lieut. Clayton, R.N.
- 29 Cinerary Urn of Upchurch ware, ornamented with the "dot" pattern (contains bones), height $9\frac{1}{2}$ in.
- 30 Vase with neck, in the form of a barrel, of Upchurch ware, height $8\frac{3}{4}$ inches.
- 31 Goblet with handle, light red, height $7\frac{1}{2}$ in.
- 32 Vase, Upchurch ware, similar to No. 30, height 9 in.
- 33 Cinerary Urn, black (contains bones), height $7\frac{1}{2}$ in.
- 34 Goblet, black, Upchurch ware, height 7 in.

* The term "urn vase" has been used throughout the Catalogue to denote those vessels which take the form of cinerary urns, in contradistinction to those with narrow necks, to which the term "vase" has been applied.

- 35 Urn Vase, red, height $6\frac{1}{2}$ in.
 36 Urn Vase, brown, height $4\frac{1}{4}$ in.
 37 Goblet with handle, buff, height $7\frac{1}{4}$ in.
 38 Goblet, of Upchurch ware, height 7 in.
 39 Goblet, of Upchurch ware, height $6\frac{1}{4}$ in.
 40 Cinerary Urn, brown, height 8 in.
 41 Samian Patera, name obliterated.
 42 Samian Patera, stamped RIIOGENTI.
 43 Samian Patera, stamped ALBINVS.
 44 Samian Patera, stamped OFLVCCO.
 45 Patera, in imitation of Samian ware.
 46 Patera, brown.
 47 Patera, black.
 48 Fragments of embossed Bowls of Samian ware, ornamented with festoon and tassel border, floral designs, animals, etc., likewise stamped outside CINNV.
 49 Fragment of Samian ware, with leaf pattern.
 50 Child's Feeding Bottle (Samian), with nipple-spout and handle, height $4\frac{1}{4}$ in.
 51 Vase, black, of Upchurch ware, height $4\frac{1}{2}$ in.
 52 Vase, black, of Upchurch ware, height $4\frac{1}{2}$ in.
 53 Urn Vase, black, of Upchurch ware, height $3\frac{1}{2}$ in.
 54 Vase, buff.
 55 Urn Vase, black, of Upchurch ware, height 4 in.
 56 Urn Vase, Durobrivian ware, height $2\frac{3}{4}$ in.
 57 Urn Vase, of Upchurch ware, height 4 in.
 58 Urn Vase, of Upchurch ware, height $4\frac{1}{4}$ in.
 59 Glass Vase with handle, green (in Case B), height 11 in.
 60 Neck of a glass Unguent Phial.
 61 Bronze Fragment.
 62 Portion of a bronze Armilla.
 63 Bronze Tweezers.
 64 Bronze Buckle.
 65 Bronze Stylus.

Nos. 29—65 were found at Canterbury in graves in the Cemetery of the Nuns of the Holy Sepulchre, during researches conducted for the Society by John Brent, Esq., F.S.A., in the year 1861. (*Arch. Cant.*, Vol. IV., pp. 27—42, with plate.)

- 66 Lamp of fine clay. On the bottom in relief is the word FORTIS.
 67 Lamp of similar ware, stamped PROBVS. On the top is the head of Jupiter Ammon.
 68 Vase, brown, height 4 in.

These three were found in Roman graves at Borough Green, near *Ightham*. Donor, Mr. B. Harrison.

- 69 Urn Vase, 4 in., black }
 70 Vase, 4 in., black } in one was a bronze fibula.

Found at Little Preston, *Aylesford*. Donor, E. T. Betts, Esq.

- 71 Upchurch Vase, height 5 in.
- 72 Upchurch Urn Vase, height $3\frac{1}{2}$ in.
- 73 Upchurch Urn Vase, height $3\frac{1}{2}$ in.
- 74 Goblet with handle, red, height 6 in.
- 75 Samian Cup, maker's name obliterated, height 2 in.
- 76 Samian Cup, height 2 in.
- 77 Samian Cup, stamped ANNLOSF, height $2\frac{1}{4}$ in.
- 78 Samian Patera, stamped OF ALBAN(I).

Nos. 71—78 were found in a Roman Cemetery in Thompson's Field, *Plaxtol*.* Donor, Major Luard, R.A.

- 79 Vase (imperfect).
- 80 Urn Vase of Upchurch ware, height $4\frac{1}{2}$ in.
- 81 Samian Cup. Donor, W. Laurence, Esq. Height $1\frac{1}{2}$ in.
- 82 Fibula, bronze. Donor, W. Laurence, Esq.
- 83 Urn Vase of Upchurch ware, height $2\frac{3}{4}$ in.
- 84 Patera, red black.
- 85 Urn Vase, black brown, height 3 in.
- 86 Urn Vase, black brown, height $3\frac{1}{2}$ in.
- 87 Urn Vase, black brown, height $4\frac{1}{2}$ in.

Nos. 79—87 were found in Roman graves in Furness's brickfield, *Burham*. Donor, E. L. Betts, Esq.

- 88 Cinerary Urn, red, contains bones, height 9 in.
- 89 Patera, black, diam. 7 in.
- 90 Durobrivian ware (fragments), roughened on the exterior like meal cloth.
- 91 Patera of Samian Ware, with leaf pattern.

Nos. 88—91 were found in a Roman grave discovered in Lee's chalk-pit, *Burham*. Donor, E. L. Betts, Esq.

- 92 Patera, black. Locality unknown.
- 93 Samian Patera. Maker's name obliterated.
- 94 Samian Patera (imperfect). Stamped DOVICVS.
- 95 Samian Cup.

Nos. 93—95 were found in a wood at Penn's Court, *Loose*.

- 96 Samian Cup.
- 97 Samian Patera. Stamped AVITIMA. Found near *Woodnesborough* on Lord Northbourne's land. Donor, C. Roach Smith, Esq.
- 98 Goblet with handle, red. Height $5\frac{1}{2}$ inches. Found near Kit's Coty House.

* *Arch. Cant.*, Vol. II., p. 6.

- 99 Ornamental Tile. } Locality unknown.
 100 Antefixæ* (two portions). }
 101 Wall Painting (three pieces). From a Roman villa discovered at *Allington*. It is probable that the antefixæ (No. 100) were found there also.
- 102 Colander (base of), bronze. Locality unknown.
 103 Sepulchral Incised Slab (portion). *Chester*. Donor, C. Roach Smith, Esq.

RICHBOROUGH.

The following articles were discovered at Richborough during excavations around the mass of masonry within the Roman castrum, conducted for the Society by George Dowker, Esq., F.G.S., and the Rev. R. Drake in the year 1865.†

- 104 Fragments of the drapery of a colossal bronze Statue.
 105 Sculptured Marble (three pieces).
 106 Flue Tiles, etc. (sundry pieces).
 107 Fragments of Pottery, illustrating the various kinds of ware found at Richborough.
 108 Tesseræ (3), $4\frac{1}{2}$ in. long by $1\frac{1}{4}$ in. wide. Used probably in the borders of tessellated pavements.
 109 Axe-head, iron.



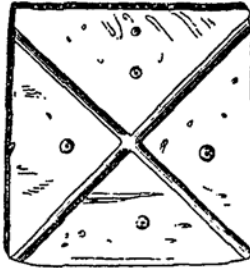
* The division between the flange tiles which covered the roof of a Roman villa was sometimes protected by semi-cylindrical channel tiles, which prevented the rain getting in between the joints. The channel tile which overhung the eaves of the house was ornamented with an antefix of pottery, in the form of a Medusa's or lion's head, and was the forerunner of the lion's head so common upon the iron-shoots along the eaves of houses at the present day. For other examples, see *Journal of the British Archaeological Association*, vol. v., p. 231, and *Collectanea Antiqua*, vol. v., p. 24.

† *Arch. Cant.*, Vol. VIII., pp. 1—15.

- 110 Fibula, circular, bronze gilt. Ornamented in the centre with an eagle cut in intaglio.



- 111 Counter, bone, $1\frac{1}{4}$ in. square and $\frac{1}{4}$ in. thick.



- 112 Steelyard, bronze.
 113 Fragments of bronze Armillæ.
 114 Dress Pin with bust of female forming the head.



- 115 Fragment of embossed Jet.
 116 Fragment of Bronze, plated with gold.
 117 Fragment of a Bone Needle or Piercer.
 118 Keys (2), iron.
 119 Goblet with handle, drab, height 6 in.
 120 Bowl, bronze, with handles (one wanting). Diameter $12\frac{1}{2}$ in.,
 $4\frac{1}{2}$ in. deep. Found at *Dartford*, in the roadway at the
 north-west corner of the church.

CASE B.—COLLECTION FORMED, AND PRESENTED TO THE SOCIETY,
 BY WILLIAM BLAND, ESQ., OF HARTLIP PLACE, NEAR SITTING-
 BOURNE, 1859.

The majority of the objects in this Case (unless otherwise stated) were found by Mr. Bland when uncovering the foundations of a Roman villa discovered on his estate in Dane Field, Hartlip. A full account of the excavations, accompanied by engravings of the articles found, together with plans of the villa, has been published by Mr. Roach Smith in his *Collectanea Antiqua*, vol. ii., pp. 1 to 24. A reprint of it is in the Society's Library.

- 121 Urn Vase, blue black, height $5\frac{1}{2}$ in.
 122 Neck of Goblet, with handle, red covered with cream colour.
 123 Neck of Amphora, with two handles, cream.
 124 Incense Cup, red, height $2\frac{1}{2}$ in.
 125 Urn Vase (imperfect).
 126 } Portions of embossed Bowls, with foliated pattern, festoon, and
 127 } tassel bordering.
 128 } Portion of another larger embossed vessel, ornamented with
 figures of "Victory" holding a palm-branch and crowning
 with a wreath a personage wearing the *paludamentum*
 over a tunic. This specimen, although very elaborately
 decorated, is of inferior workmanship to that usually
 displayed on pottery of this kind. Mr. Roach Smith
 regarded it as of late date, and remarked that "the
 costume of these figures cannot well be referred to a
 period prior to the fifth century." He further states,
 "There is just enough of character left to bring the
 manufacture of the vase possibly within the verge of the
 Roman domination of Britain." The maker's name,
 SABINIM, is stamped in relief on the outside of the vase.
 129 Cup, stamped BITVRIX.F., height $2\frac{1}{4}$ in.
 130 Cup, name obliterated, height $1\frac{3}{4}$ in.
 131 Cup, height 2 in.
 132 Cup, stamped RVFFIM, height $1\frac{3}{8}$ in.
 133 Patera, with leaf pattern.
 134 Patera, stamped L. R. SECVN.
 135 Patera, stamped MARTIALIS.
 Nos. 126—135 are of Samian ware.
 136 Urn Vase, with dot pattern, height 5 in.
 137 Urn Vase, with dot pattern, height 4 in.

- 138 Vase, height $4\frac{1}{2}$ in.
 139 Vase, height 6 in.
 140 Cup with handle, very rude, height $1\frac{3}{4}$ in.
 141 Vessel with three compartments, height $1\frac{3}{4}$ in.
 142 Patera, diameter $4\frac{3}{4}$ in.
 143 Patera, diameter 5 in.
 144 Patera, diameter $6\frac{1}{4}$ in.
 145 Lid of Vase.
 146 Lid of Vase.

Nos. 136—146 are all of Upchurch ware, of black colour, and were probably obtained from the site of the Roman potteries near Hartlip.

- 147 Urn Vase, red, height 6 in.
 148 Urn Vase, brown, Durobrivian ware, height $4\frac{1}{4}$ in.
 149 Vase, brown, decorated with scroll design in yellow Durobrivian ware, height $3\frac{1}{2}$ in.
 150 Urn Vase, black, height $4\frac{3}{4}$ in.
 151 Urn Vase, black, height 4 in.
 152 Goblet with handle, grey black, height $4\frac{3}{4}$ in.
 153 Vase, black, height 5 in.
 154 Urn Vase, grey black, height $3\frac{1}{2}$ in.

Nos. 150—154 are of Upchurch ware.

- 155 Goblet (imperfect), red, height $8\frac{1}{4}$ in.
 156 Goblet with handle, of same type as 155. Both these vessels were coloured with a brown pigment, height $7\frac{1}{4}$ in.
 157 Vase with handle, red, height 5 in.
 158 Handle and neck of Goblet, red.
 159 Cup, stamped PATRIC, height $2\frac{1}{2}$ in.
 160 Cup, height $2\frac{1}{4}$ in.
 161 Patera, stamped MÆ . . . I. M.
 162 Patera, stamped INIIA F.
 163 Patera, with leaf pattern.
 164 Patera, name obliterated.
 165 Patera.

Nos. 159—165 are of Samian ware.

Nos. 147—165 were found in Roman graves discovered on *Murston Court Farm*, near Sittingbourne, in 1857.

- 166 Cup, pale blue glass, height $4\frac{1}{4}$ in.
 167 Portion of an embossed glass cup, pale green, height 3 in.
 Mr. Roach Smith says of this specimen, "As a work of art it is among the most rare and interesting." The figures upon it are somewhat indistinct. The designs represent sports of the circus, chariot racing, and gladiatorial combats; the names are those of the charioteers and of the combatants, and so far as they can be deciphered appear to be—MEN CRESGEM

MES HERMVS.

- 168 Neck with handle, and fragments of an amber glass Case.
 For perfect vessels with this description of handle attached
 see *Arch. Cant.*, Vols. IX., p. 170; XVI., p. 2.
- 169 A similar example, but of a pale green colour.
- 170 Unguent Phial, popularly called a Tear Bottle.
- 171 Bases of Flagons in green glass (3). One is marked with a
 diamond pattern, with the letters ML, probably denoting
 the trade-mark and initials of the maker.
- 172 Fragments of window glass shewing the salvage edge.
- 173 Fragments of glass vessels.
- 174 Ornament (fragment), bronze.
- 175—179 Fibulæ, bronze. No. 178 circular, in speculum metal.
- 180 Ornament (fragment), bronze.
- 181 Bronze fragment, decorated in relief with a sea-nymph
 holding garlands; it may have formed part of a shield or
 belonged to armour, but it is impossible to say to what it
 was attached.
- 182 Bead, green glass.
- 183 Bead, opaque blue, fluted.
- 184 Bead, } apparently made from agates.
- 185 Bead, }
- 186 Bead, green glass, striped with a yellow zig-zag pattern.
- 187 Disc* of dark opaque blue glass.
- 188 Bosses or Stud-heads (5).
- 189 Fragments of Ornaments and Rings (8).
- 190 Nail.
- 191 Tweezers.
- 192 Fragments of Ornaments (4).
- 193 Spoon.
- 194 Nail Cleaners (3).
- 195 Tweezers (3).
- 196 Tweezers and Ear-pick attached to a ring for the châtelaine.
- 197 Ear-pick.
- 198 Dress-pin.
- 199 Spoon.
- 200 Bodkins (5).
- 201 Styli.
- 202 Ligula.
- 203 Ligula, ornamented with spiral silver wire.
- 204 Dress-pins (6), with knob-heads.
- 205 Nail.
- 206 Needle or Piercer.

Nos. 188—206 are all of bronze.

* This disc is convex on one side and flat on the other, being in the form of a button without holes. It is hard to say for what purpose such discs were intended, unless they were used as counters or for some game like draughts. Mr. Brent found a similar specimen in an Anglo-Saxon grave at Sarre (see No. 486). Mr. H. Durden, of Blandford, possesses 19, which were found within the Roman earthworks on Hod Hill, Dorset.

- 207 Spoons (2), bone.
 208 Pins (2), bone.
 209 Needle or Piercer, bone.
 210 Spring Balance for weighing purposes.
 211 Nails (33).
 212 Stylus.
 213 Tools resembling drills used with our modern centre-bit stock.
 214 Hook or Ride for a hinge.
 215 Sickle-shaped articles (4), probably used for horticultural purposes.
 216 Hooks (2).
 217 Keys (2).
 218 Rings (2).
 219 Pruning Hook.
 220 Point of Hook.
 221 Knives (8). One with bone fittings to handle.
 222 Various Articles.
 223 Keys, etc. (8).

Nos. 211—223 are all of iron.

- 224 Bronze Fragments of an Armilla and Torc.
 225 Hair-pin, silver.
 226 Bodkin, bronze.
 227 Stylus, iron.
 228 Fragments of superior Pottery.
 229 Fragment of Plaster distempered in colours.
 230 Tile, lined in squares to imitate tesserae.
 231 Portions of Mill-stones or Querns.
 232 Spindle-whorls (4), one bone, one chalk, and two in clay.
 233 Flange Tile, from *Otterham Creek*, near Upchurch.
 234 Stag's-horn Picks (2).
 235 Hone of sandstone.
 235a Intaglio, oval, red carnelian. Found in the garden adjoining the Prior's Gate, *Rochester*. Donor, Mrs. Richard Twopeny.

A. Stuart Murray, Esq., LL.D., Keeper of Greek and Roman Antiquities at the British Museum, has kindly given the following description of this gem :—"The oval antique appears to represent Hercules standing on a terminus or boundary post. The lion's skin, though in an unusual position, hanging in front (instead of on the left arm or down the back, with only the fore-paws visible, crossed at the throat), the tufts of hair extending down to the very end of the pendant portion, probably representing one of the hind legs, the three apples (more commonly held in his right hand), lying in the field near the bottom, the other figure on the upper part of the field representing some other fruit—all combine, with the crisp curl of the hair and the massiveness of the face, to point to Hercules, instead of to Terminus or to Marsyas, while the presence of the fruits in the field is very appropriate to his position as the guardian of some garden boundary, in which character he is known to have been occasionally represented. The gem is probably of provincial rather than Roman or Neapolitan work."

CASE C.—ANGLO-SAXON PERIOD.

Unless otherwise described, the Anglo-Saxon objects in this Case were discovered at Sarre in the Isle of Thanet, or at Bifrons in the parish of Patricksbourne. Those from Sarre were the result of researches made, for the Society, by the late John Brent, Esq., F.S.A., who opened 272 graves during the years 1862—1864. The Bifrons antiquities were obtained by the late T. G. Godfrey-Faussett, Esq., in 1866-67 and later, from graves discovered on the estate of the Marquess Conyngham. The late Marquess presented the whole of these objects to the Society.

236 Goblet, red, height $11\frac{1}{2}$ in. Found in *Harrietsham Churchyard*. Donor, Rev. J. C. B. Riddell.

FROM SARRE.

- 237 Jug with handle and lip, height 7 in.
 238 A similar specimen, height 7 in.
 239 Goblet, height $8\frac{1}{2}$ in.
 240 Urn Vase, height 3 in.
 241 Urn Vase, height $3\frac{1}{4}$ in.
 242 Urn Vase, height 4 in.
 243 Goblet, height $9\frac{1}{4}$ in.
 244 Goblet, height $11\frac{1}{2}$ in.
 245 Goblet, red, height $10\frac{1}{2}$ in.
 246 Goblet, height $10\frac{1}{2}$ in.
 247 Goblet, height $8\frac{1}{4}$ in.
 248 Goblet, red, the neck is bored with two holes through which a cord could be passed, height 10 in.
 249 Urn Vase, height $4\frac{1}{2}$ in.
 250 Goblet, height $12\frac{1}{4}$ in.
 251 Goblet, height 10 in.
 252 Goblet, red, height 12 in.
 253 Goblet, neck wanting.
 254 Goblet, red, height 9 in.
 255 Goblet, height 9 in.
 256 Goblet, red, height $9\frac{1}{2}$ in.
 257 Goblet, height $9\frac{1}{2}$ in.

Nos. 236—244, 246, 247, 249—251, 255, and 257 are of black ware. See *Arch. Cant.*, VII., plates i., ii., 314.

- 258 Skull (female) from No. 4 grave.* Mr. Brent evidently saved this skull in consequence of the remarkable number and richness of the articles discovered with the skeleton. They comprised gold wire thread, a silver finger ring, six gold bracteates, a large quantity of beads, 4 bronze fibulæ, a glass drinking cup, 3 knives, 2 keys, a pair of scissor shears, a silver spoon, a crystal ball or amulet, a buckle, a comb, a pin, 2 Roman coins, and a fossil *echinus*.

* *Arch. Cant.*, Vol. V., p. 310.

- 259 Vase of green glass, with thread of glass twisted round the neck, height $3\frac{1}{2}$ in.
- 259 α A similar Vase.
- 260 Vase, green glass, height $2\frac{1}{2}$ in. Pl. i., fig. 1.
- 261 Drinking Cup, green glass, height 5 in. Pl. i., fig. 2.
- 262 Drinking Cup, green glass. Donor, Mrs. Holman. Height 3 in.
- 263 Drinking Cup, amber glass, ornamented with cornucopia shaped projections, and threads of glass round the neck, height $7\frac{3}{4}$ in. Pl. i., fig. 3.
- 264 A similar specimen, height $7\frac{3}{4}$ in. See *Arch. Cant.*, VI., pl. v., 3.
- 265 Vase or Goblet, pale amber glass, ornamented with twisted threads, height 5 in.
- 266 A similar specimen, height 5 in.
- 267 Drinking Cup of olive green glass, height $7\frac{1}{2}$ in. Found in a grave discovered on *Wye Down*.
- 268 Drinking Cup of green glass, height $3\frac{3}{4}$ in. Pl. i., fig. 4.
- 269 Drinking Cup of green glass, height $6\frac{1}{4}$ in. Pl. i., fig. 5.
- 270 Vessel of green glass, not unlike a round medicine bottle, height 6 in.

Nos. 268—270 were found at *Bifrons*.

- 271 Vase of green glass, height 5 in.
- 272 Vase of green glass, height 4 in.
- 273 Vase of green glass, height $4\frac{1}{2}$ in.

Nos. 272, 273 were found in the banks at the head of *Otterham Creek*; they came from the Bland Collection.

- 273 Δ Cups (a pair) of amber glass, fluted, height $4\frac{1}{4}$ in. Found in a bronze bowl (No. 640) in a grave at *Westwell*.

GOLD ORNAMENTS.

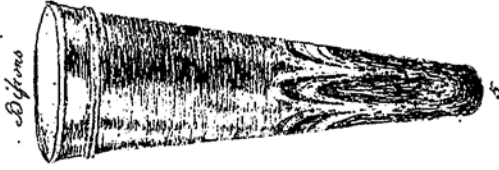
a. Bracteate, with snake-like design in the centre, surrounded with the Vandyke pattern.

b. }
c. } Bracteates, with disjointed snake design.
d. }
e. }

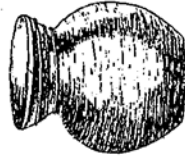
f. Bracteate with a more perfect snake with head and open jaws.

a to f were found at Sarre in grave No. 4;* they all have loops for suspension, and the pattern is stamped on one side only. See *Arch. Cant.*, V., pl. i., 1—6.

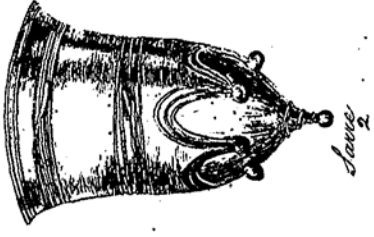
* *Arch. Cant.*, Vol. IV., p. 314, pl. i.



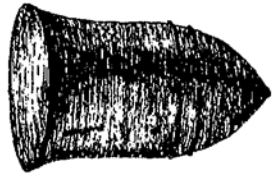
Difeno



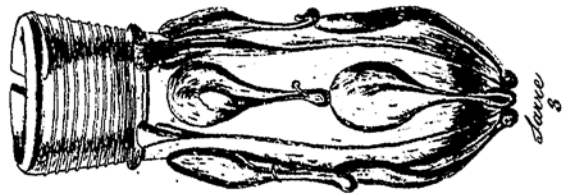
larvo
7



larvo
2



Difeno
4



larvo
3

Anglo Saxon Glass Vessels.

g. Bracteate.*



BEADS.

These interesting objects abounded in both the Sarre and Bifrons graves. Some are of amber, and others of clear and opaque glass, in various colours, some are round, others square or hexagonal, while many are precisely similar to the modern bugle-bead. Large numbers of the glass beads are adorned with vermiculated work, the lines, diagonals, chevrons, etc., being in white, red, and yellow. Most of the necklaces have a very large bead in the centre, which was doubtless worn as an amulet or charm. There are likewise numerous minute beads resembling pearls, which appear to be of blown glass. They are of the size and shape of No. 2 shot. They were evidently made in lengths, and then broken into single beads, pairs, triplets, etc., according to the taste of the wearer.

TWENTY-FOUR NECKLACES FROM SARRE, formed as follows:—

274	Of 40 Beads.
275	Of 33 Beads.
276	Of 40 Beads.
277	Of 29 Beads.
278	Of 37 Beads.
279	Of 83 Beads.
280	Of 38 Beads.
281	Of 37 Beads.
282	Of 62 Beads.
283	Of 35 Beads.
284	Of 23 Beads.
285	Of 19 Beads.
286	Of 53 Beads.
287	Of 82 Beads.
288	Of 23 Beads.
289	Of 137 Beads.
290	Of 69 Beads.
291	Of 35 Beads.
292	Of 22 Beads.
293	Of 28 Beads.

* *Arch. Cant.*, Vol. VI., p. 173.

- 294 Of 24 Beads.
 295 Of 105 Beads.
 296 Of 65 Beads.
 297 Of 25 Beads.

Total number of Beads—1154.

Some of these necklaces are lithographed in colours in *Arch. Cant.*, VII., pl. i., ii., 307.

THIRTEEN NECKLACES FROM BIFRONS, formed as follows:—

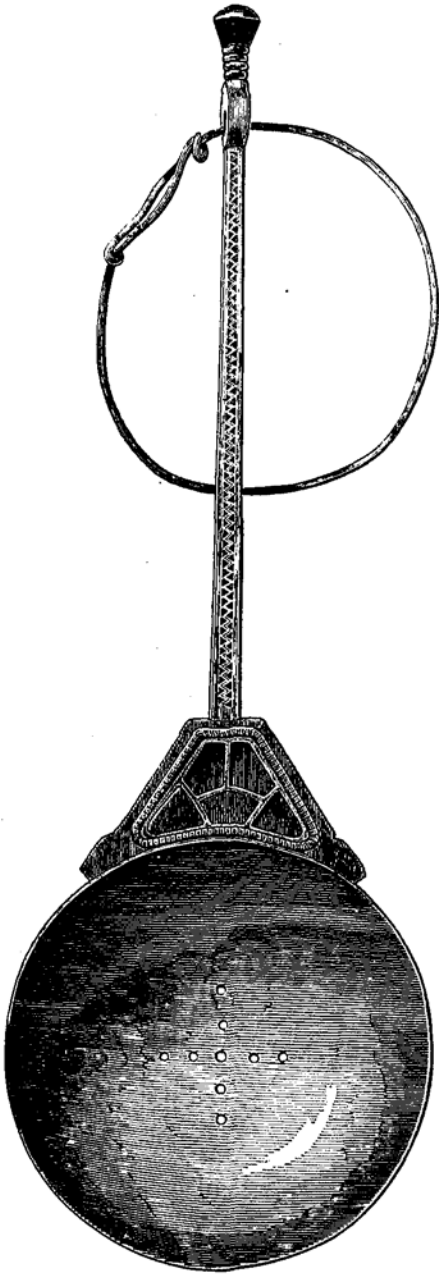
- 298 Of 44 Beads.
 299 Of 52 Beads.
 300 Of 45 Beads.
 301 Of 20 Beads.
 302 Of 35 Beads.
 303 Of 20 Beads.
 304 Of 21 Beads.
 305 Of 64 Beads.
 306 Of 58 Beads.
 307 Of 191 Beads.
 308 Of 54 Beads.
 309 Of 38 Beads.
 310 Of 110 Beads.

Total number of Beads—752.

- 311 Spoon of white metal with wire ring attached, bowl pierced with eight holes.
 312 Crystal Ball, bound with silver bands. It has a wire ring for purposes of suspension.
 313 Spoon of silver, with wire ring; at the junction of the bowl and handle the metal is flattened into a triangular shield, which is set with pieces of red and blue glass. The bowl is pierced with nine holes.
 314 Crystal Ball, similar to No. 312.
 315 Crystal Ball, similar to No. 312.
 316 Silver Spoon, the handle is decorated with red glass and a carbuncle; attached to the handle is a small ear-pick. The bowl is pierced with thirteen holes.

FROM SARRE.

- 317 Silver Spoon, the handle decorated with red glass. See *Arch. Cant.*, V., pl. ii., 3.
 318 Crystal Ball, bound with silver bands. See *Arch. Cant.*, V., pl. ii., 7.
 319—323 Five buckles of Bronze.
 324 Plates of Bronze, fastened together with rivets.
 325 Strap-tongue, bronze.



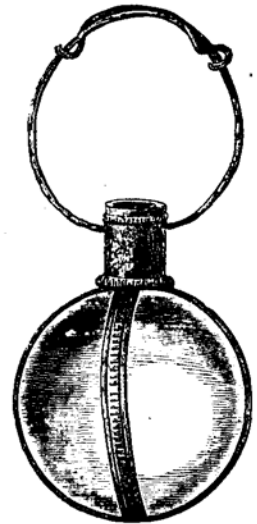
No. 313.



No. 514A.



No. 514A.



No. 312.

326 Pin of Bone.



327, 328 Two Pins of bronze.

329 Pin of bone.

330—332 Three Pins of bronze.

333 Bodkin of silver.

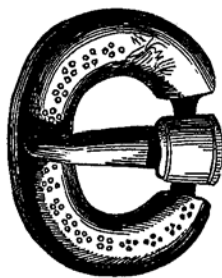
334—336 Three Pins of bronze. Cuts are given of two.



337 Rim of a Situla or Bucket, bronze gilt.

338 Fragment in bronze, probably the bottom of a bowl.

339—358 Twenty Buckles in white metal, bronze and iron. Cuts are given of Nos. 341, 353, 357.



359 Article in iron, like an 8 link.

360 Finger Ring of twisted wire.

361 Finger Ring, milled.

362—364 Three Finger Rings of twisted wire. 362 is engraved in *Arch. Cant.*, V., pl. ii., 4.

365 _Armillæ (fragment), milled.

Nos. 360—365 appear to be of silver.

366 Gold-wire Thread, from five distinct graves; it had originally been woven into some woollen texture.



367 Bronze Fibula.

368 Bronze Fibula.

369 Bronze Fibula, in the form of a bird.

370—373 Four bronze Fibulæ.

374 Bronze Fibula, ending at the point in the head of a reptile.

375 Bronze Fibula.

376, 377 Two bronze Pins, or Dress Fasteners, with rings through the heads.

378 Bronze Fibula, ring-shaped, bronze.



379 Ornament, diamond-shaped, with four loops at the back by which it could be fastened to a garment. The front is set with four pieces of ivory, each boss of ivory also being set in the centre with *lapis-lazuli*. See *Arch. Cant.*, VI., pl. vi., 9.

380 Bronze Ring (like a curtain ring).

381 Smaller bronze Ring.

382 Bronze Fibula, ring-shaped.

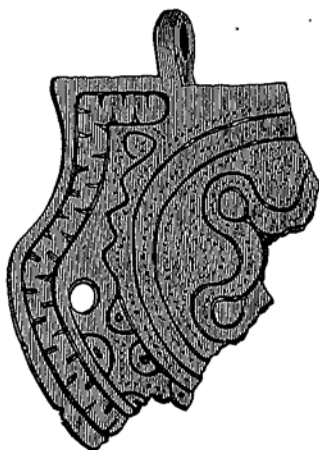
383 Bronze Armilla.

384, 385 Two Fibulæ, flat ring-shaped, of bronze.



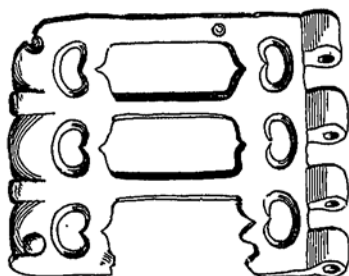
386, 387 Two Fibulæ, ring-shaped, of bronze.

388 Bronze Ornament with loop.



389 Flat Ring of bronze.

390 Belt-clasp of bronze.



391 Ring of bronze.

392 Fibula, ring shaped, of bronze.

393 Fifty Draughtsmen of bone, many ornamented with concentric rings, with a dot in the centre of each. One is made from the tooth of some animal.

394 Another set (41). On the flat side of each are two holes, punctured about $\frac{1}{8}$ of an inch deep, the convex side being quite plain. See *Arch. Cant.*, VI., p. 157.

It is evident that these rare and curious objects were used in some game of chance, as Mr. Brent found, with the second set, two dice, one bearing the mark of cinq, the other that of six. Mr. Roach Smith has figured* two dice which were found by Bryan

* *Inventorium Sepulchrale*, p. 7.

Faussett in an Anglo-Saxon cemetery at Gilton Town, near Sandwich. Mr. Bateman discovered a set of twenty-eight draughtsmen in a barrow at New Inns, Derbyshire;* they were marked with eight, nine, or ten dots each; a few having a dot within a ring, similar to our Sarre examples. Tacitus referst† to the gambling proclivities of the ancient Germans, and states that they played games of hazard or dice as a serious business, and when everything else was lost, would stake even their persons and liberties on the last throw.

395 Article in bronze, from a châtelaine.

396 Key-like instruments, bronze and iron.



397 Tweezers of bronze.

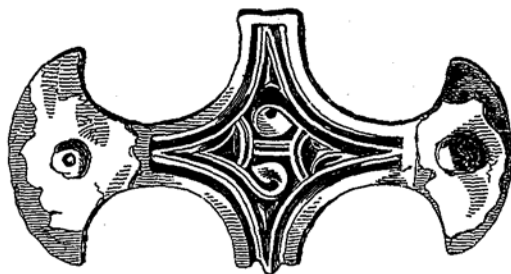


398 Fibula, circular, 1 in. in diameter; the centre was set, when found, with a raised green stone, which has since disappeared; round the boss radiate ten wedge-shaped slices of garnet, mounted in silver. See *Arch. Cant.*, VI., pl. vi., 8.

* *Ten Years' Diggings*, pp. 180-1.

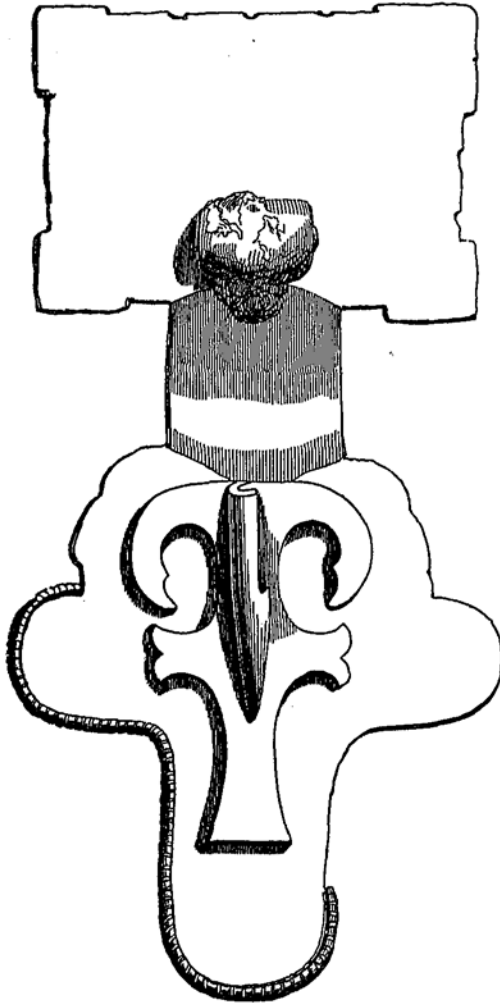
† *De Morb. Germ.*, lib. xxiv.

- 399 Fibula of bronze gilt, circular (diam. $1\frac{1}{2}$ in.), central boss of ivory set with a garnet, round which are other garnets. See *Arch. Cant.*, VI., pl. vi., 6.
- 400 Fibula of bronze gilt, circular (diam. $\frac{7}{8}$ in.), set in the centre with a garnet. See *Arch. Cant.*, VI., pl. vi., 5.
- 401 Fibula of bronze gilt, circular (diam. $1\frac{1}{4}$ in.), set in the centre with a garnet, surrounded by a ring of ivory, from which radiate three sliced garnets. See *Arch. Cant.*, V., pl. i., 8.
- 402 Fibula of the same type and size, but the boss in the centre is set with *lapis-lazuli*. See *Arch. Cant.*, V., pl. i., 9.
- 403 Fibula of bronze gilt, circular (diam. $1\frac{3}{4}$ in.); set with sliced garnets and ivory; there appears to have been a gold stud in the centre of the ivory boss. See *Arch. Cant.*, VI., pl. vi., 7.
- 404 Fibula of bronze gilt, circular (diam. 1 in.). In the centre is a green stone, set round with triangular slices of garnet. See *Arch. Cant.*, VI., pl. vi., 4.
- 405 Ornament for a girdle or strap of bronze gilt, with a rivet at each end; silver plating remains round the rivets.



- 406 Fibula of bronze gilt, circular (diam. $1\frac{1}{8}$ in.), set with ivory and garnets.
- 407 Fibula of bronze gilt, richly chased. Length $3\frac{3}{4}$ in. See *Arch. Cant.*, V., plate ii., 2.
- 408 Fibula, silver gilt. In the centre of the upper compartment is a circular garnet, flanked by two others of a triangular shape; all three are bordered with gold. Down the centre runs a cross, at the arms of which are semicircular garnets; the lower end of the cross divides, making a border round an oval garnet at the base. Length $2\frac{3}{4}$ in. See *Arch. Cant.*, V., pl. ii., 1.
- 409 Fibula of bronze gilt (the reverse seems to have been silvered). The four corners of its upper compartment are set with square garnets, and an oblong garnet forms the centre, surrounded with a thin edging of silver. Elaborate devices are chased along its edges and borders. An edging of thick chased silver wire was to be partially seen along the edge of the brooch, which is now wanting. Down the centre of the jewel is a raised rib, silvered, set

with a disc of ivory and two drops of sliced garnets. On either side of the rib are other settings in ivory and garnet. Length 5 inches. See *Arch. Cant.*, VI., pl. vi., 1. The back of the fibula is shewn in the cut.



- 410 Bead with silver spiral finger ring coiled round it.
 411 Stud of bronze gilt, set with a garnet.



- 412 Fibula, square, with rounded corners and scalloped; the face is divided into eight sections, each being filled up with sliced garnets. See *Arch. Cant.*, VI., pl. vi., 10.
- 413 Nail of bronze gilt, with large flat head elegantly chased.



- 414 Carbuncles (2), set in silver, as pendants; the mounting of one is gone. See *Arch. Cant.*, VI., pl. vi., 2.
- 415 Pendant of gold set with a garnet. See *Arch. Cant.*, VI., pl. vi., 3.
- 416 Band or ferrule of bronze.
- 417 Armilla of silver wire.
- 418 Finger Ring of silver; spiral, double coil.



- 419 Seven Earrings or Finger Rings of silver wire.
420. Four Armillæ of bronze wire.

BEADS.

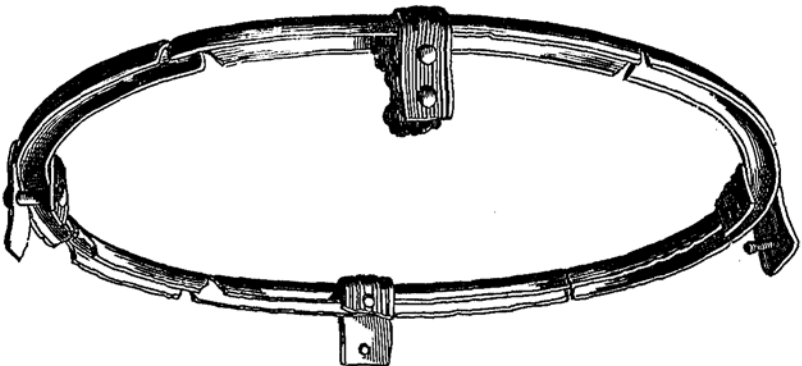
The following small strands of beads may have formed bracelets. In some graves Mr. Brent found only one or two beads, which probably belonged to earrings, or were worn as charms by those who did not possess larger and more costly amulets.

- 421 Strand of 22 Beads.
- 422 Strand of 6 Beads.
- 423 Strand of 18 Beads.
- 424 Strand of 13 Beads.
- 425 Strand of 4 Beads.
- 426 Strand of 5 Beads.
- 427 Strand of 19 Beads.
- 428 Strand of 8 Beads.
- 429 Strand of 10 Beads.
- 430 Strand of 2 Beads.
- 431 Strand of 11 Beads.
- 432 Strand of 9 Beads.
- 433 Strand of 20 Beads.
- 434 Strand of 6 Beads.
- 435 Strand of 14 Beads.

- 436 Strand of 5 Beads.
 437 Strand of 11 Beads.
 438 Strand of 4 Beads.
 439 Strand of 3 Beads.
 440 Strand of 3 Beads.
 441 Strand of 3 Beads.
 442 Strand of 5 Beads.
 443 Strand of 8 Beads.
 444 Strand of 7 Beads.
 445 Strand of 16 Beads.
 446 Strand of 5 Beads.
 447 Strand of 4 Beads.
 448 Strand of 3 Beads.
 449 Strand of 3 Beads.
 450 Strand of 1 Bead.
 451 Strand of 4 Beads.
 452 Strand of 8 Beads.
 453 Strand of 12 Beads.
 454 Strand of 19 Beads.
 455 Strand of 3 Beads.
 456 Strand of 2 Beads.
 457 Strand of 3 Beads.
 458 Strand of 1 Bead.
 459 Strand of 1 Bead.
 460 Strand of 3 Beads.
 461 Strand of 2 Beads.
 462 Strand of 2 Beads.
 463 Strand of 1 Bead.
 464 Strand of 3 Beads.
 465 Strand of 1 Bead, with fragment of a *châtelaine* article attached.

Total number of Beads—313.

- 466 Rim of a *Situla* or Bucket of bronze. Such articles were occasionally interred at the feet of the deceased, and probably contained offerings of food. *Situlae* are generally of wood with bronze hoops and mountings; they have been found mounted in silver, and are sometimes wholly of bronze.



- 467 Fragments of Bronze with four brads for fastening the same ;
they may have belonged to a situla.
468 Bronze for ornamenting a strap or belt.



- 469 Pair of Scales, with nineteen weights of bronze ; with one or two exceptions the latter were made from Roman coins which had been ground down to a certain required weight. The following is a descriptive list of the weights, together with dimensions of the scales (see *Arch. Cant.*, VI., p. 161) :—

Scales.—Diameter, an inch and seven-eighths.
Balance.—Length, five inches, slightly chased.

Nineteen Weights :—

- 1 Flat on one side, convex on the other. 1063 grains.
- 2 Large brass of Faustina the Elder, much ground down.
On the obverse are seven punctures. 320 grains.
- 3 Second brass of Antoninus Pius. 296 grains.
- 4 A coin, much ground down. 248 grains.
- 5 Second brass of Antoninus Pius, much ground down
and cut square. 190 grains.
- 6 Second brass of Nero (probably), much ground down,
146 grains.
- 7 A Coin, obliterated, indented with a star-like pattern,
which had been inlaid with brass. 140 grains.
- 8 A Coin, marked with a trefoil, much ground down, 96
grains.
- 9 A Coin, with punctures arranged cross-wise, much
worn down. 46 grains.
- 10 A Coin, much ground down. 94 grains.
- 11 Small brass Coin. 16 grains.
- 12 Small brass Coin of Constantine. 17 grains.
- 13 Small brass Coin. 18 grains.
- 14 Small rude Weight with punctured marks. 11 grains.
- 15 Small rude Weight with punctured marks. 8 grains.
- 16 Resembling No. 1, but flat on both sides and punc-
tured. 300 grains.
- 17 Probably Coin obliterated. 51 grains.
- 18 Probably Coin obliterated. 19 grains.
- 19 Probably Coin obliterated. 8 grains.

The above set of Scales and Weights from Sarre is the fourth which has been discovered, similar sets having been met with at

Ash,* Gilton Town,† and Ozengell,‡ all, like Sarre, situate in the Isle of Thanet.

470 Bell of bronze with wire attached.

471 Comb of bone. It works on a hinge and folds in a case like a modern pocket-comb.

472 Portions of bone Combs.



473 Crystal Ball.

474 Crystal Ball, found in a Saxon grave in *Harrietsham* churchyard. Donor, Rev. J. C. B. Riddell.

These balls appear to have had no bands of metal, as other examples in the collection have. They may have been treasured as charms, and carried in a wallet suspended from the girdle.

475 Shell (*Cyprea Arabica*). This was found with mussel shells in a grave, and as it is of a kind foreign to our shores, the discovery is of peculiar interest. Shells were evidently buried with the dead by the Anglo-Saxons, for a superstitious purpose, and as they are occasionally found pierced to be worn as amulets, they may be regarded as charms. The shells hitherto met with in graves are cowries, limpets, nerites, and snails.§ Fossils, such as echini and belemnites, were also made use of for the same purpose. (See No. 482.)

476 Châtelaine, bronze, with nail cleaner, piercer, and two other instruments attached.

477 Studs|| (16), bronze, some ornamented. Used for fastening straps to buckles (compare with No. 555).

478 Studs (6), bronze, in the form of nails, two have gilt heads.

479 Studs (12), bronze, for decorating harness.

* *Nenia Brit.*, pl. xii. † *Invent. Sep.*, pp. 22, 23, pl. xvii.

‡ *Coll. Ant.*, vol. iii., pp. 12—14, pl. iv.

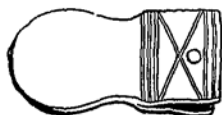
§ References to shells may be found in *Inventorium Sepulchrale*, *Nenia Britannica*, and *Reliquiæ Diluviana*. Sir R. Colt Hoare found shells in the Deveril Barrow.

|| In *Inventorium Sepulchrale*, p. xxix, Mr. Roach Smith has illustrated the manner in which they were probably used.

- 480 Tags, bronze, spear-shaped, for ornamenting the ends of straps.
 481 Articles in bronze with loops for suspension.
 482 Fossil Echinus and Belemnite.
 483 Coin of Antoninus Pius, and four others in small brass.
 484 Ruby Glass (a fragment).
 485 Miniature Axe, bronze, probably a toy.



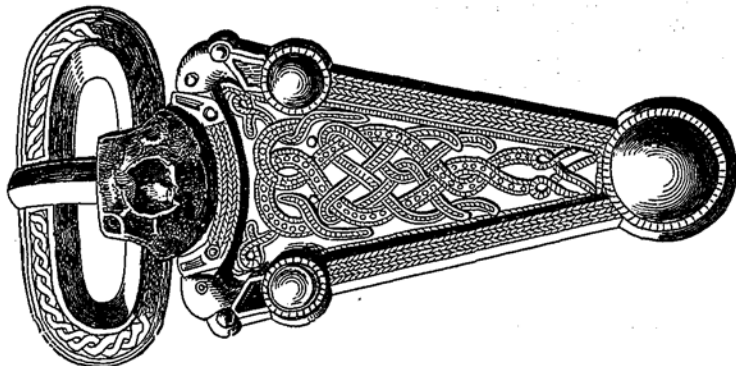
- 486 Disc of dark blue opaque glass, without holes or eye to fasten it. (See No. 187.)
 487 Stud-heads (3), silvered.
 488 Disc of silver, ornamented; it has a round boss in the centre.
 489 Chain-ring of bronze.
 490 Earring with blue bead.
 491 Earring with white glass bead, striped yellow.
 492 Earring with brown bead.
 493 Earring with green bead.
 494 Earring with amber bead.
 495 Earring.
 496 Studs, bronze, with plated heads of studs. The latter shew the method of plating; thus, a thin plate of silver was beaten out, a disc was then cut from it exactly the size of the stud-head, it was then attached by some strong cement as No. 496A. A detached disc is No. 496B.
 497 Rim of a Situla, bronze.
 498 Clamp of a Casket of bronze.
 499 Handle of bronze Shears or Tongs.*
 500 Rings (2) of bronze.
 501 Tag-ends, from thongs of leather.



- 502 Fibula or ornament of bronze.

* *Invent. Sep.*, p. 119.

- 503 Buckle of bronze, gilt, triangular. An embossed plate of gold fills up the centre of the triangle, the hinge of the tongue of the buckle was originally jewelled, in the centre of it was a boss of ivory.



- 504 Fibulæ (a pair), saucer-shaped, of bronze gilt; diam. 2 in. Incuse brooches of this variety are very uncommon in Kent; they occur chiefly in Berkshire, Oxfordshire, and Gloucestershire.
- 505 Fibula of bronze, harp shape (Roman).
- 506 Fibula of bronze gilt, set with a sliced garnet in the centre (similar to No. 400).
- 507 Hone, of sandstone, for sharpening knives.
- 508 Amulet of bone.
- 509 Buckle of bronze (fragment).
- 510 Buckle of bronze and iron.
- 511 Coin.
- 512 Beads (5).

Nos. 504—512 were found in graves discovered at *Horton Kirby* by the late Rev. R. P. Coates, on the north side of the railway, not far distant from the Boys' Home, near Farningham Road Station.

- 513 Fibula of bronze, radiated in a similar manner to the Frankish examples (see those from Bifrons). Found in *Harrietsham* churchyard. Donor, Rev. J. C. B. Riddell.
- 514 Tweezers upon a ring, bronze. From a grave discovered on *Wye Down*. Found with No. 265; also a spear head (No. 875), and the umbo of a shield.

FROM BIFRONS.

- 514A Gold Bracteates (4, from one grave) with loops for suspension. Three are ornamented with the disjointed snake-like design, similar to the examples from Sarre; the fourth is very curious, with a rude representation of a human figure kneeling, with hands uplifted, and face upturned in an attitude of supplication. See *Arch. Cant.*, X., p. 310.
- 514B Two similar examples.

- 515 Boss or ornament, of iron.
 516 Barring with four beads.
 517 Coins, small brass, Roman.
 518 Rivets, bronze.
 519 Studs with holes, bronze.
 520 Whetstones.
 521 Fragments of a bone Comb.
 522—544 Twenty-three Buckles of bronze and white metal.
 545—551 Seven Tags, bronze, for the ends of straps.
 552 Fragments of bronze, with rivets.
 553 Neck-ring of silver wire.
 554 Ferrule of bronze.
 555 Loop fasteners (6 pairs and 2 odd), bronze and white metal.
 (Compare with No. 477.)
 556 Studs (2), bronze gilt, with fluted heads.
 557 Bronze plates with holes, probably decorations of belts.
 558 Bronze Armilla, with ornamented ends.
 559—561 Three Armillæ of bronze wire.
 562 Finger-ring, silver, plain hoop.
 563 Finger-ring, silver, plain flat.
 564 Finger-ring, silver, spiral, marked with lines.
 565 Finger-ring, bronze.
 566 Finger-ring, bronze gilt, set with red glass in an oval.
 567 Finger-ring, bronze, broad band.
 568 Ferrule, bronze, with piece of iron attached.
 569 Ferrule.
 570 Finger-ring, silver, flat band.
 571 Ring, bronze.
 572 Ring (fragment).
 573 Fibula, bronze gilt, richly chased.
 574 Fibula, bronze gilt, set with sliced garnets.
 575 Fibula, bronze gilt, set with sliced garnets.
 576 Fibula, bronze gilt.
 577 Fibula, bronze, ornamented with rings and dots.
 578 Fibula } These are semi-harp shaped, and terminate in a
 579 Fibula } creature's head with broad snout like a duck's
 580 Fibula } bill.
 581 Fibula, bronze, set with sliced garnets.
 582 Fibula, bronze, ornamented with rings.
 583 Fibula, bronze, in the form of a parrot-like bird.
 584 Fibula, bronze gilt, in the form of a parrot-like bird, with eye
 of garnet. (Compare with No. 369.)
 585 A pair to No. 584.
 586 A pair to No. 573. Found in one grave.
 587 A pair to No. 574. Found in one grave.
 588 A pair to No. 575. Found in one grave.
 589 A pair to No. 576. Found in one grave.
 590 Similar to No. 577. Found in one grave.

Nos. 573—582 and 586—590 are all of the cruciform type.

- Nos. 578—580 are ruder, partaking more of the Roman form, being slightly cruciform and semi-harp shaped.
- Nos. 585—590 are of bronze gilt.
- 591, 592 Fibulæ, circular, bronze gilt, found in one grave. No. 592 is set with sliced garnet, as was also originally No. 591. The latter shews in the centre the piece of silver foil with its cross hatching, so common to Anglo-Saxon jewelled ornaments. The foil was used, as in modern times, to heighten the brilliancy of the gem.
- 593 A similar example, set with three sliced garnets, with an opaque green stone in the centre.
- 594 Fibula, circular, iron, radiated and set in each compartment with sliced garnets.
- 595 Fibula, circular, silver, set with sliced garnets and an opaque blue substance.
- 596, 597 Fibulæ, bronze, radiated from the hinge ends; the ends of the rays and their opposite terminations are set with sliced garnets. Found in one grave.
- 598, 599 Fibulæ, circular, bronze gilt, each ornamented with a grotesque representation of a human face.
- 600 Belt-clasp, bronze, set with sliced garnets and opaque blue pastes.
- 601, 602 Fibulæ, similar to Nos. 596, 597, but smaller and not jewelled. Found in one grave.
- 603 Stud-head or ornament of bronze gilt, set with a garnet.
- 604 Fibula, bronze, a flat ring, milled round the edge and ornamented on surface with a double row of concentric rings.
- 605 Fibula, bronze, simply a circular disc, an inch and a half in diameter, ornamented with punctured marks arranged in circles.
- 606 Fibula, bronze, flat ring type, with portion of pin remaining.
- 607, 608 Fibulæ, bronze, of fine workmanship. See *Arch. Cant.*, X., 313.
- 609—611 Three ring Fibulæ, bronze.
- 612 Cloak-pin with chased head of bronze.
- 613 Tweezers of bronze.
- 614 Châtelaine with appendages of bronze.
- 615 Châtelaine Chain with Ear-pick attached, and two ornamental bronze-gilt Buttons set with garnets by which the chain was fastened to the dress or girdle.
- 616 A similar Chain, found adhering by corrosion to a knife; the latter when stuck into the girdle would naturally have come into contact with the chain of the châtelaine.
- 617 Handle of a Clasp-knife of bronze openwork, representing a dog seizing a hare by the scut.
- 618 } Two Pins for the Hair or a Cloak with faceted heads of
619 } bronze. Length 6 inches.
- 620 Keys (a pair), bronze.
- 621 Beads of amber.
- 622 Bugles and Glass Beads.

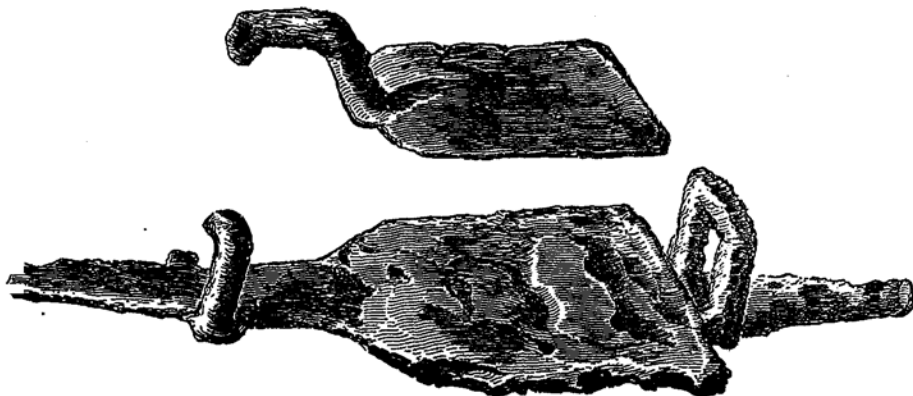
- 623 Beads, strand of 37.
 624 Amulet or Charm of fluted glass.
 625 Bead of clear crystal.
 626 Bead of opaque glass.
 627 Amulet of stone.
 628 String of 4 Beads.
 629 String of 7 Beads.
 630 String of 5 Beads.
 631 String of 5 Beads.
 632 Bead of white glass interlaced with yellow.
 633 Amulet of chalk.
 634 Amulet of stone.
 635 Button of glass.
 636 Disc of Jet.
 637 Fragment of light blue opaque glass.
 638 Bone Comb (a fragment).
 639 Situla, or funereal bucket, of wood bound with hoops of bronze, height 4 in.
 640 Bronze Bowl (fragments), found in a grave at *Westwell*; it contained two fluted amber glass cups (see No. 273A).
 641 Bronze Bowl (in fragments) with flanged rim, decorated with small bosses.

CASE D.

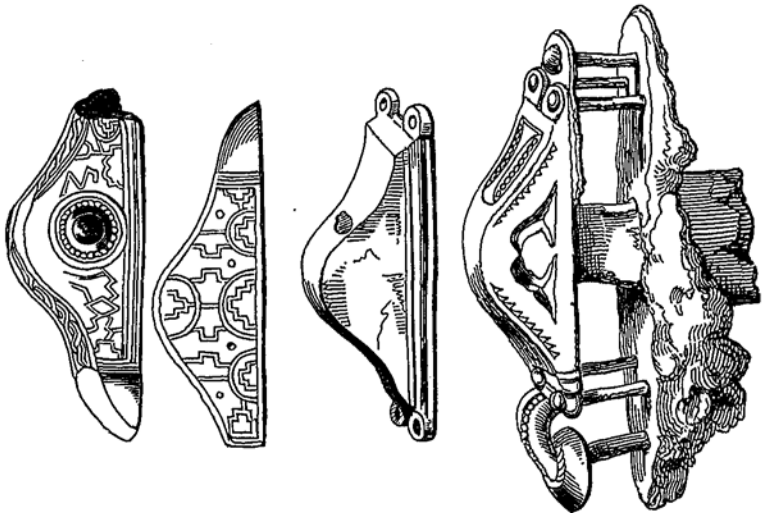
Contains weapons and implements of iron, all of which were found in Anglo-Saxon graves discovered at Sarre in Thanet, or at Bifrons. As none of the specimens of iron were dressed with a preservative solution at the time of their discovery, a very large number went to pieces, and the labels on those which remained became obliterated by the oxidization of the iron, thus rendering it impossible to properly classify them. Some few, however, of the Bifrons examples have been identified, and will be found marked accordingly; the remainder may be regarded as chiefly from Sarre.

642 Chisel or wedge, length $2\frac{1}{4}$ in.

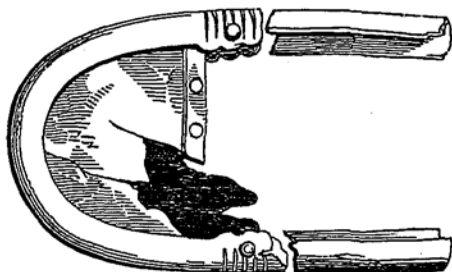
643 Iron object of peculiar form.



- 644 Seax (imperfect).
 645 Seax or War-knife, length 12 in.
 646—650 Similar examples.
 651—656 Knives worn at the girdle, about 8 in. long.
 657—709 Knives for domestic use found in graves of both males and females, length from 4 to 7 in. 36 of these knives are from Bifrons.
 710—724 Fittings of Shields, chiefly from Bifrons.
 725—748 Studs from Shields.
 749—754 Fittings of Shields (probably), chiefly from Bifrons.
 755—761 Clamps for fastening the wood-work of coffins.
 762—765 Smaller examples for the same purpose.
 766—774 Coffin Bolts.
 775 Lock-plate, bronze, attached to wood.
 776—797 Keys and Key-like Instruments, 6 of them from Bifrons.
 See *Arch. Cant.*, VII., pl. xiii., 320.
 798 Horse's Snaffle Bit.
 799 Buckles.
 800 Sundry Articles.
 801 Ringles, 8 of them from Bifrons.
 802—806 Scissor Shears, 2 came from Bifrons.
 807 Padlock.
 808—815 Nails, 2 came from Bifrons.
 816, 817 Fransica or War-axe.
 818—837 Swords, about 36 in. long (4 came from Bifrons): See *Arch. Cant.*, VII., plates xi., xii., 320.
 838 Bronze Pommels of sword hilts (3), one set with a garnet.



- 839 Bronze Chapes of sword scabbards (3).



- 840 Bronze Pommel of sword and chape of scabbard.
 841 Hilt of sword and decorations of sword-belt. On both these objects may be seen the Aryan religious symbol called the "suastika," which was used as typical of heat and light. These symbols more frequently occur in Scandinavian relics. (From Bifrons.) See *Arch. Cant.*, X., p. 312.
 842 Decorations of Sword-belt, bronze. (From Bifrons.)
 843 Bell, or bell-shaped object. On the exterior is adhering some woven material.
 844—867 24 Umboes of shields (four came from Bifrons).
 868—870 Portions of Angons. The angon was a long barbed spear, which when thrown became entangled in the shield, the assailant then rushed in, placed his foot on the handle of the angon and stabbed his opponent with a seax or knife.
 871 Javelin, similar to the Zulu assegai, length 2 ft.
 872—919 Heads of Javelins and spears, from 7 to 22 in. long (12 of these came from Bifrons). See *Arch. Cant.*, VII., plates xiii., xiv., 320.
 920 Spike, quadrilateral, length $7\frac{1}{2}$ in.
 921—923 Spear-sockets or ferrules, length 5 to 7 in.

MISCELLANEOUS ANTIQUITIES.

- 924 Dagger, iron with bone handle, found in a wood near *Gad's Hill, Strood*. Donor, Major Luard, R.A.
 925 Dagger, iron, found in a gravel pit at *Brith*. Donor, John Harris, Esq.
 926 Ancient Key of Sevenoaks Church, iron. Donor, Mr. Hooper.
 927 Ancient Seal, silver, with glass handle, of the 17th century (?). The arms resemble those of Doughty. Donor, Robt. Rugg, Esq.
 928 Ancient Seal of bronze found at *Teston*. Represents the pelican in piety, with the Cross on the field. Possibly belonged to some religious body in Italy. Inscription defaced.

38 TRADESMEN'S TOKENS, ASHFORD, CANTERBURY.

- 929 Matrix of a Seal in jet, found at *Sandhurst*, Kent. Legend on one side is TECTA LEGE LECTA TEGE. On the other, SIGILLVM JOHANNIS. Donor, W. J. Lightfoot, Esq.
- 930 Bulla (lead) of Pope Innocent IV. A.D. 1245. Found in the garden of *Swarden* Rectory. Donor, Rev. F. F. Haslewood.
- 931 Finger-ring of brass, with the letter R on the shield. 15th century.
- 932 Thumb-ring of brass, found on Penenden Heath.
- 933 Sword. This was formerly hung over the Romden pew in *Swarden* Church, and is said to have belonged to Colonel Otway. Donor, Rev. F. F. Haslewood. (Vide *History and Antiquities of Swarden*, p. 11.)
- 934 Sword, found on pulling down an old house at *Rolvenden*. Donor, Rev. W. J. Edge.
- 935 Sword, inscribed on one side of the blade, "SI DEUS EST PRO," and on the other, "NOBIS QUI CONTRA."
- 936 Antique Comb of iron, found in the rectory garden at *Harrietsham*. Donor, Rev. J. C. B. Riddell.

KENTISH TRADESMEN'S TOKENS.

PRESENTED BY JOHN EVANS, ESQ., D.C.L.

ASHFORD.

- Obv.* Benjamin Bowyer. In Ashford, 1666.
Rev. His Half Penny.
Obv. Thomas Flint. 1664.
Rev. In Ashford. $\frac{F}{T^S}$.
Obv. William Bottin. 1669 (with stirrup).
Rev. Of Ashford in Kent. His Half Penny $\frac{P}{W^S}$.
Obv. Robert Walbe of
Rev. Ashford in Kent. 16-9. His Halfe Penny.
Obv. Samuel Wood. 1666.
Rev. At Ashford in Kent. His Half Penny.

CANTERBURY.

- Obv.* Thomas Feild in
Rev. Canterbury. 1666. His Half Penny.
Obv. At the Marrenors.
Rev. In Canterbury $\frac{S}{T^M}$.
Obv. Francis Barrick.
Rev. In Canterbury $\frac{B}{F^M}$.
Obv. Edward Crayford.
Rev. Grocer, Canterbury $\frac{C}{E^B}$.
Obv. John Cordon in
Rev. Canterbury. 1656 $\frac{C}{I^D}$.
Obv. Sibb Smith near SS.
Rev. Westgate, Canterb. SS.

- Obv.* The Sarisons Head.
Rev. In Canterbury. 1653 $\frac{P}{I.M.}$
Obv. James Cheever.
Rev. In Canterbury $\frac{J.C.}{J.C.}$
Obv. John Simpson.
Rev. In Canterbury. 1653 $\frac{S}{I.L.}$
Obv. Thomas Jeninges, His Half Penny.
Rev. Of Canterbury. 1669.
Obv. Francis Maplesden.
Rev. In Canterbury. 1666. His Half Penny.
Obv. Wilmatt Jarvise.
Rev. In Canterbury. 1664. His Half Penny.
Obv. Edward Fray in
Rev. Canterbury. 1667. His Half Penny. $E.F.S.$
Obv. Thomas Ockman.
Rev. In Canterbury. His Half Penny.
Obv. Tho. Baker. Cheesmonger.
Rev. In Canterbury. 166-. His Dubble Toaken.
Obv. Jeremiah Masterson at (The Chequers).
Rev. In Canterbury. His Half Penny $\frac{M}{I.M.}$
Obv. Anthony Fagg. Grocer.
Rev. In Canterbury $\frac{F}{A.M.}$
Obv. At The Three Kings.
Rev. In Canterbury $\frac{W}{E.A.}$
Obv. Thomas Jennings of
Rev. Canterbury. Grocer $\frac{T.H.}{T.H.}$
Obv. Walter Maplisden.
Rev. In Canterbury $\frac{M}{W.S.}$
Obv. At The Mairmayd.
Rev. In Canterbury $\frac{R}{D.M.}$

COXHEATH.

- Obv.* William Adcock in
Rev. Coxheath in Kent $\frac{A}{W.A.}$ 1657.

DEAL.

- Obv.* Thomas Parksoen.
Rev. In Dell. 1658 $\frac{P}{T.R.}$
Obv. James Coston $\frac{J.C.}{J.C.}$
Rev. Of Deall. 1653 $\frac{C}{J.E.}$
Obv. Thomas P. . . .
Rev. In Deale. 1655 $\frac{P}{T.M.}$
Obv. John Pittock.
Rev. In Deall. 1656 $\frac{P}{I.E.}$
Obv. Moyses Potter
Rev. Deale in Kent. $M.P.$

DEPTFORD.

- Obv.* Richard Mansfield. His Halfe Penny.
Rev. In Deadford. 1665, $R.M.$
Obv. At The King's Head.
Rev. In Deptford. 1649 $\frac{L}{N.D.}$

DOVER.

- Obv.* Martha Fford M F.
Rev. In Dover. 1659 M F.
Obv. At The Leopoldus.
Rev. In Dover. c M. 1651.
Obv. David Adamson.
Rev. In Dover. 1657 ^A_DM.
Obv. At The Queene
Rev. Of Bohemia in Dover ^C_IM.
Obv. At The French
Rev. Armes in Dover. D M.

ELHAM.

- Obv.* William Partridg.
Rev. Of Elham. W P.

FAVERSHAM.

- Obv.* Robert Rester. His Halfe Peny.
Rev. Fevrsham. 1661. The Queens Armes.
Obv. John Egets Backer. His Halfe Peny.
Rev. In Feversham. 1667.
Obv. John Cleare. 1666.
Rev. Of Feaversham. His Half Peny.
Obv. William Knight. 1666.
Rev. In Feaversham. His Half Peny.
Obv. James March. 1669.
Rev. In Feversham in Kent. His Half Peny J M.
Obv. Robert Hogben.
Rev. In Feversham. His Half Peny.
Obv. Francis Waterman.
Rev. In Faversham ^W_FW.

GRAVESEND.

- Obv.* James Parson.
Rev. In Gravesend ^P_EE.
Obv. Jacob Parsson.
Rev. In Gravesend ^P_EE. 1651.
Obv. John Wattson.
Rev. In Gravesend. 1653 ^W_JK.

HYTHE.

- Obv.* Tom Assfit. His Half Peny. 1670 ^B_IT.
Rev. In Hyth in Kent.
Obv. Peter Johnson.
Rev. At the Port of Hid. P I.
Obv. Fardinando Basset ^B_FM.
Rev. In Hithe. 1658.
Obv. Guy Langdon. 1659.
Rev. In Heth ^L_GE.

MARGATE.

- Obv.* Chreston Houdgben.
Rev. Of Marget in Kent. C H.
Obv. William Savage.
Rev. Of Margate in Kent. W S.
Obv. Steven Greedier. His Half Penny.
Rev. Of Marget in Thanet.

MILTON.

- Obv.* Cheny Bourne of
Rev. Milton in Kent. C B F.
Obv. George Reeve.
Rev. Of Milton. 1667. His Half Penny. G R.
Obv. William Bissy In
Rev. Milton Mercer ^BW I.

MINSTER.

- Obv.* John Dyer. His Half Penny.
Rev. Of Minster in Kent.

PLUCKLEY.

- Obv.* Edward Gooding Of
Rev. Pluckley in Kent. 1663 ^GF A.

QUEENBOROUGH.

- Obv.* Thomas Norrington In ^NT N.
Rev. Quinborough in Kent. His Halfe Penny.
Obv. Humphery Atweeke At Ye (Crown).
Rev. His Half Penny in Queenborough.

RAMSGATE.

- Obv.* Henry Oldred In Romans
Rev. Get In Ye Isle of Tennet. His Half Penny.
Obv. Clemens March At
Rev. Romansgat in Thanet ^MG M. 1658.

ROCHESTER.

- Obv.* John Kennon.
Rev. Of Rochester J K.

SANDWICH.

- Obv.* Richard Clarke.
Rev. In Sandwich. 1656 ^CR A.
Obv. John Casbe. His Half Penny.
Rev. In Sandwich (Fleur de Lis).
Obv. Thomas Young. 1667.
Rev. In Sandwich in Kent ^VT M.
Obv. Richard Crisp.
Rev. In Sandwich. R C.
Obv. Richard Ashernden ^AR S.
Rev. Of Sandwich ^AJ S.

- Obv.* Joseph Dof.
Rev. Of Sandwich.
Obv. Danill Pickley ^D_S.
Rev. In Sandwich. 1656 ^D_S.
Obv. Thomas Kingsford. His Half Penny.
Rev. Of Sandwich. Postmaster.
Obv. Anne Atkins. Widow.
Rev. Of Sandwich. 1667 ^A_A.
Obv. Thomas Sandum. His Half Penny.
Rev. In Sandwich. 1667. ^T_S.
Obv. John Vanderouce.
Rev. In Sandwich. 1656 ^V_D.
Obv. Walter Robins.
Rev. In Sandwich. 16..
Obv. George Burfoard.
Rev. Of Sandwich. 1666. His Halfe Penny.
Obv. Henry Furnice In
Rev. Sandwich. His Half Penny.
Obv. R. Robins
Rev. In Sandwich ^R_S. 1655.
Obv. John Revell. His Half Penny.
Rev. In Sandwich.

SITTINGBOURNE.

- Obv.* William Webb At The (George)
Rev. In Sittingbourne. 1670. His Half Penny.
Obv. John Milway In Sitting.
Rev. Borne next Crown ^M_I.

STURRY.

- Obv.* Thomas Johnson
Rev. At Stoowry. 1650. ^T_J.

WYE.

- Obv.* Richard Whittingham. In Wye. 1667.
Rev. (Flying Horse.) His $\frac{1}{2}$ Penny.
Obv. John Coulter.
Rev. Grocer in Wye. 1652 ^C_S.
Obv. Thomas Dan Weaver.
Rev. In Wye 165- ^D_TM.

MEDALS.*

PRESENTED BY EDWARD PRETTY, Esq., F.S.A.

- 1 Memorial of Shakespeare, by J. Dassier, 1736.
- 2 Taking of Portobello, by Admiral Vernon, 22 Nov. 1739.
- 3 The same.
- 4 Prize Medal of the Royal Society of Gottingen, 1750.
- 5 Capture of Prague, by Frederick the Great, 6 May 1757.
- 6 Recapture of Prague, by Prince Charles of Lorraine, 26 Nov. 1744.
- 7 Coronation of George III. and Queen Charlotte 22 Sep. 1761.
- 8 Earl Spencer, appointed First Lord of the Admiralty, 2 March 1795, by W. Wyon.
- 9 Earl St. Vincent. Victory off Cape St. Vincent, 14 Feb. 1797.
- 10 Victory of the Nile, 1 Aug. 1798.
- 11 Duke of Wellington. Victories of Assaye, Vimiera, Talavera, and Busaco.
- 12 George IV. as Regent, Peace of Paris 1814, and Centenary of the accession of the House of Hanover.
- 13 Memorial of Thomas, John and Sarah Holford.
- 14 John Lee, LL.D., First President of the Numismatic Society of London, 1838.
- 15 William Roscoe, littérateur, centenary of birth, 1853.
- 16 Memorial of Matthew Bolton, the engineer, 24th Aug. 1809.
- 17 Charles Roach Smith. The walls of Aq. Tarbell restored. 1858.
- 18 Society of Industry founded, 29 Nov. 1783.
- 19 Foundation Stone of St. George's Hall, Liverpool, laid 18 Sep. 1854.
- 20 Impression of the Scottish Privy Seal, temp. the Commonwealth, by T. Simon.
- 21 Impression of Seal of the Hospital of St. Mary Magdalene in Gaywood, Norfolk.
- 22 Louis XV. and Maria of Poland (marriage), 1725.
- 23 Burning of the Bastille, Paris, 14 July 1789; and erection of the Column, 28 July 1840.
- 24 Federation of Versailles (civil rights granted to the clergy), 11 July 1790.
- 25 Prize Medal of the Agricultural Society of Haute Guienne, France.
- 26 Memorial of the deaths of Henri IV., Louis XVI., Louis XVII., Marie Antoinette, etc.
- 27 Urban VII., his election to the Papal See, 1590.
- 28, 29 Urban VIII., rebuilding of the Port of Ostia, 1631.
- 30 Clement X., opening of the Porta Sancta, 1675.
- 31 Clement XI., the harbour of Civita Vecchia restored, 1702.
- 32 Clement XII., memorial of his pious and useful acts.

* The Curator is indebted to H. Appold Grueber, Esq., F.S.A., Keeper of Coins and Medals at the British Museum, for kindly examining and describing these medals.

- 33 Alexander VII., the Porta Flaminia restored and re-opened, 1601.
- 34 Charles VIII. of Sweden, memorial.
- 35 Francis I., his entry into Milan, 1515.
- 36 Charles Gustavus Tessin, Swedish statesman and architect, died 1761.
- 37 The Grand Duke Daniel Alexandrovitch created Grand Duke of Moscow in 1296, and reigned 42 years.
- 38 Medal of the City of Geneva.
- 39 Portrait of the Emperor Galba; one of a series of the twelve Cæsars made in France, circa 1750.
- 40 Plaque with Mars, Venus, Jupiter, and others (Italian, 17th century).
- 41 Plaque representing emperor sacrificing (Italian, 16th century).
- 42 Scipio (portrait), Italian, 17th century.
- 43—52 Religious Badges made for distribution at first communions, etc., 16th and 17th centuries.
- 53 Cast of Prize Medal of Christ's College, Cambridge.

CASTS OF SEALS.

The place where the Matrix is deposited, or an impression is to be found, is mentioned at end of line.

- 1 Aylesford White Friars.
- 2 Bilsington Priory. Chapter House.
- 3 Bilsington, Edmund, Prior of. Found in Essex.
- 4 Boxley Abbey, Abbot of. Canterbury Cathedral.
- 5 Boxley Abbey. Augmentation Office.
- 6 Boxley Abbey. Counter Seal.
- 7 Bradsole Abbey of St. Radegund. Canterbury Cathedral.
- 8 Bradsole Abbey of St. Radegund. Canterbury Cathedral.
- 9 Bradsole Abbey of St. Radegund. Canterbury Cathedral.
- 10 Bromleigh, Wm. de Wicklewood, Vicar of. Brit. Museum.

CANTERBURY.

- 11 City Seal. Canterbury Corporation.
- 12 Counter Seal.
- 13 City Seal. Brass Matrix. Canterbury Corporation.
- 14 Counter Seal. British Museum.
- 15 Mayor's Seal. Brass Matrix. Canterbury Corporation.
- 16 Seal for Recognance of Debts. Temp. Edward I.
- 17 Obverse of City Seal (?). From an old lead impression.
- 18 Reverse of City Seal after the Reformation. Reverse of No. 13.
- 19 Privy Seal of the Corporation. Canterbury Corporation.

- 20 Mayor of. Silver Matrix. Corporation.
 21 Chamberlain. Silver Matrix. Corporation.
 22 City Seal. Corporation.
 23 Mayor of. Corporation.
 24 Justice of Peace. Corporation.
 25 St. Austin's Lath, Eastern Division. Brass Matrix. Ald.
 Friend.
 26—41 Eight Seals of the Priory, or of the Cathedral, of Christ
 Church, and eight Counter Seals, ancient and modern.—
 Canterbury Cathedral.
 42 Sedis Vacantis. — Walford, Esq.

SEALS OF ARCHBISHOPS.

- 43 Anselm. 1093. New College, Oxon.
 43A Anselm. 1093. Rochester Cathedral.
 44 Ralph. 1114. Duchy Lancaster.
 45 William. 1122. Duchy Lancaster.
 46 Theobald. 1138. Canterbury Cathedral.
 47 Theobald, Counter Seal.
 48 Thomas à Becket. 1162. British Museum.
 49 Thomas à Becket. Counter Seal.
 50 Thomas à Becket. Mr. Sandys.
 51
 52 Richard. 1174. Canterbury Cathedral.
 53 Richard, Counter Seal.
 53A Baldwin. 1184. King's College, Cambridge.
 53B Baldwin, Counter Seal.
 54 Hubert. 1193. British Museum.
 55 Stephen. 1206. Duchy Lancaster.
 56 Stephen, Counter Seal.
 57 Richard. 1229. Canterbury Cathedral.
 58 Richard, Counter Seal.
 59 Edmund. 1234. Hereford Cathedral.
 60 Edmund, Counter Seal.
 61 Boniface. 1259. Canterbury Cathedral.
 62 Boniface, Counter Seal.
 63 Robert, 1272. Canterbury Cathedral.
 64 Robert, Counter Seal.
 65 John. 1278. Canterbury Cathedral.
 66 John, Counter Seal.
 67 Robert. Matrix found in the Thames.
 68 Robert. 1308. British Museum.
 68A Walter. 1320. St. Peter's College, Cambridge.
 69 Simon. 1330. Canterbury Cathedral.
 70 John. 1333. Canterbury Cathedral.
 71 John. 1333. Canterbury Cathedral.
 72 John. 1333. Canterbury Cathedral.
 73 Simon. 1349. Canterbury Cathedral.
 74 Simon. 1367. G. Baker, Esq.

- 75 Simon. 1354. British Museum.
 76 Simon. 1354. Canterbury Cathedral.
 77 Simon. 1376. British Museum.
 78 William. 1381. British Museum.
 79 William. 1381. Augmentation Office.
 80 Thomas. 1397. Rev. — Hamper.
 81 Henry. 1414. New College, Oxon.
 82 Henry, Counter Seal. New College, Oxon.
 82A Henry. 1414. St. John's College, Cambridge.
 83 Henry. 1415. Augmentation Office.
 83A Henry, Signet of. 1415. New College, Oxon.
 83B John.
 84 Thomas. 1454.
 85 John. 1489.
 85A John. 1489.
 86 William. 1504. G. Baker, Esq.
 87 William. 1529. Canterbury Cathedral.
 88 William. 1530. Caius College, Cambridge.
 89 Thomas. 1534. British Museum.
 90 Thomas. 1534. Canterbury Cathedral.
 91 Thomas. 1534. Canterbury Cathedral.
 92 Thomas, Signet of. Coventry Corporation.
 93 Reginald. 1556. Rev. L. Larking.
 94 Reginald. 1556. Rev. L. Larking.
 95 Matthew. 1559. Caius College, Cambridge.
 96 Matthew, Signet Ring. Caius College, Cambridge.
 97 Matthew. 1559. Caius College, Cambridge.
 98 Matthew. 1559. Caius College, Cambridge.
 99 Matthew. 1559. Caius College, Cambridge.
 100 Edmund. 1576. Pembroke College, Cambridge.
 101 Edmund, Counter Seal.
 101A John. 1583. St. Peter's College, Cambridge.
 102 William. 1633. King's College, Cambridge.
 103 William, Counter Seal. King's College, Cambridge.
 104 William. Canterbury Cathedral.
 105 John. 1848. Brass Matrix.
-
- 106 Prior of Christ's Church. 1236. Cathedral.
 107 Roger, Prior of Christ's Church. 1243. Cathedral.
 108 Nicholas, Prior of Christ's Church. 1243. Cathedral.
 109 Henry, Prior of Christ's Church. S. D. Cathedral.
 110 Roger, Prior of Christ's Church. 1272. Cathedral.
 111 Robert, Prior of Christ's Church. 1366. Cathedral.
 112 William, Prior of Christ's Church. 1476. Cathedral.
 113 William, Prior of Christ's Church. 1486. Cathedral.
 114 William Gildford, Priest of Christ Church. Cathedral.
 115 Almoner of Christ Church. Cathedral.
 116 Official Seal of Christ Church. Cathedral.
 117 St. Augustine's Monastery. Cathedral.

- 118 St. Augustine's Monastery. Counter Seal. Cathedral.
 119 St. Augustine's Monastery. Cathedral.
 120 St. Augustine's Monastery. Counter Seal. Cathedral.
 121 St. Augustine's Monastery. Cathedral.
 122 St. Augustine's Monastery. Counter Seal. Cathedral.
 123 St. Augustine's Monastery. Cathedral.
 124 St. Augustine's Monastery. Counter Seal. Cathedral.
 125 Thomas, Abbot of St. Augustine's Monastery. Cathedral.
 126 Robert, Abbot of St. Augustine's Monastery. Cathedral.
 127 Roger, Abbot of St. Augustine's Monastery. Cathedral.
 128 Roger, Abbot of St. Augustine's Monastery. Counter Seal.
 Cathedral.
 129 Roger, Abbot of St. Augustine's Monastery. Cathedral.
 130 Roger, Abbot of St. Augustine's Monastery. Cathedral.
 131 Thomas, Abbot of St. Augustine's Monastery. Cathedral.
 132 Treasurer of St. Augustine's. Society of Antiquaries,
 London.
 133 St. Augustine's College, Canterbury.
 134 St. Gregory's Priory. Chapter House.
 135 St. Gregory's. Chapter House.
 136 St. Gregory's Counter Seal.
 137 Prior of St. Gregory's. 1200. Cathedral.
 138 Robert, Prior of St. Gregory's. 1243. Cathedral.
 139 Hugh, Prior of. 1263. Cathedral.
 140 Henry, Prior of. 1277. Cathedral.
 141 Augustine Friars. 1243. Cathedral.
 142 Minor Friars. Cathedral.
 143 Brother Hugh de Sutton. Cathedral.
 144 Eastbridge Hospital. Cathedral.
 145 Eastbridge Hospital, Counter Seal. St. John's Coll., Camb.
 146 Eastbridge Hospital. St. John's College, Cambridge.
 147 St. Sepulchre's Nunnery. St. John's College, Cambridge.
 148 Jesus' Hospital. Master of Hospital.
 149 Jesus' Hospital. Master of Hospital.
 149A St. John's Hospital, John, Vicar of. 1327. Master of
 Hospital.
 150 St. John's Hospital. Brass Matrix. Alderman Friend.
 151 St. John's Hospital. Brass Matrix. Master of Hospital.
 152 Maynard Spital. Alderman Friend.
 153 St. Nicholas and St. Catherine's Hospital.
 154 Poor Priests' Hospital. Cathedral.
 155 Simon, Master of Poor Priests' Hospital, and Archdeacon.
 156 Simon, Counter Seal. Cathedral.
 157 Poor Priests' Hospital. Cathedral.
 158 Aged Poor Priests' Hospital. Cathedral.
 159 Dean of. Cathedral.
 160 Henry, Archdeacon of. Cathedral.
 161 Richard, Archdeacon of. 1397. Cathedral.
 162 Richard, Archdeacon of. Cathedral.
 163 John. Brass Matrix. Mr. Chester.

48 CASTS OF SEALS (CANTERBURY—DARTFORD).

- 164 Archbishop's Court. Cathedral.
 165 Commissary General.
 166 Commissary of the Archbishop. 1351.
 167 Commissary of the Archbishop. 1389. Matrix. Cathedral.
 168 Commissary.
 169 Commissary General.
 170 Curates' Office. British Museum.
 171 Probate Court. 1339. British Museum.
 172 Consistory Court. 1550. Cathedral.
 172A Prerogative Court. 1533. Christ's College, Cambridge.
 173 Prerogative Court. 1555. British Museum.
 174 Prerogative Court. Caius College, Cambridge.
 175 Prerogative Court. Caius College, Cambridge.
 176 Prerogative Court. 1556. Sidney College, Cambridge.
 177 Prerogative Court. 1556.
 178 Prerogative Court. British Museum.
 179 } Keeper of the Spirituality of the Archbishop. 1563. Caius
 180 } College, Cambridge.
 181 Vicar General.
 182 Vicar General. 1633.
 183 Commissary of the Archbishop.
 184 Archdeacon. 1825.
 185 Archdeacon's Official. 1742.
 186 Archdeacon's Official. 1825.
 187 Ivory Matrix found in the Cathedral Tower.
 188 Matrix found in the Cathedral.
 189 Matrix in the Museum.
 190 Matrix found at Canterbury.
 191 Matrix in possession of F. Masters, Esq.
 192 Commissary for Calais of William, Archbishop 1462.
 193 Private Seal of Archbishop Matthew Parker.
 194 Prerogative Court, temp. Commonwealth. Rev. L. Larking.
 195 Anselm, Archbishop. See 43A.
 196
 197
 198
 199
 200
-
- 201 Cliff Rectory. Brass Matrix.
 202 Cliff Rectory. Brass Matrix. Mr. Twopeny, Rochester.
 203 Cobham College. Cathedral.
 204 Cumbwell Priory. 1130. Cathedral.
 205 Cumbwell Priory. Chapter House.
 206 Cumbwell Priory, Counter Seal.
 207 Cumbwell Priory. Another Counter Seal of No. 205, dated
 1230.
 208 Dartford Priory. Aug. Office.
 209 Dartford Priory. Chapter House.
 210 Dartford Priory. Caius College, Cambridge.

- 211 Deal Town Seal, temp. William III. Matrix. Corporation.
- 212 Deal, Mayor of, temp. William III. Corporation.
- 213 Deal, No. 211, altered in 1836.
- 214 Deal, Notary Public.
- 215 Deal, Notary Public.
- 216 Deal Water Works.

DOVER.

- 217 Town Seal. Corporation.
- 218 Town Counter Seal. Corporation.
- 219 Mayor's Seal. Corporation.
- 220 Mayor's Seal. Corporation.
- 221 Mayor's Seal. Corporation.
- 222 Mayor's Seal. Corporation.
- 223 Mayor's Seal. Corporation.
- 224 Mayor's Seal. Corporation.
- 225 Coroner. Corporation.
- 226 Matrix in the Town Hall. Corporation.
- 227 Admiral of the Cinque Ports. Corporation.
- 228 Castle. Corporation.
- 229 Harbour. Corporation.
- 230 Customs. Corporation.
- 231 Customs. Corporation.
- 232 St. Martin's Priory. Canterbury Cathedral.
- 233 St. Martin's Priory, Counter Seal.
- 234 St. Martin's Priory. Aug. Off.
- 235 St. Martin's Priory, Counter Seal.
- 236 William, Dean of. 1290. Canterbury Cathedral.
- 237 Richard, Prior of. 1360. Canterbury Cathedral.
- 238 Robert, Prior of. Matrix.
- 239 Robert, Private Seal of Prior.
- 240 Le Maison Dieu. Chapter House.
- 241 Walter, Master of the Maison Dieu. 1351.
- 242 St. Rhadegund's Abbey. Matrix. British Museum.
- 243 Dionesia de Dover. 1224.

FAVERSHAM.

- 244 Town Seal. 1200. Corporation.
- 245 Town Seal. Corporation.
- 246 Town Counter Seal. Corporation.
- 247 Mayor of. Corporation.
- 248 Mayor of. Corporation.
- 249 Abbey. British Museum.
- 250 Abbey. Canterbury Cathedral.
- 251 Abbey Counter Seal.
- 252 Gervaise, Abbot of. British Museum.
- 253 Nicholas, Abbot of. 1006. Canterbury Cathedral.
- 254 Peter, Abbot of. 1200. Canterbury Cathedral.
- 255 Port Seal. Corporation.
- 256 Grammar School. Corporation.
- 257 Matrix found at Faversham.

FOLKESTONE.

- 258 Town Seal. Corporation.
 259 Mayor of. Corporation.
 260 Port Seal.
 261 Harbour.
 262 Waterworks.
 263 Notary of.
 264 Abbey of.
- 265 Fordwich Town Seal. Canterbury Cathedral.
 266 Fordwich Town Seal. Corporation.
 267 Fordwich, Bailiffs of. Aug. Off.
 268 Harbledown Hospital. Matrix. Master of the Hospital.
 269 Hythe Town Seal. Corporation.
 270 Hythe, Mayor of. Corporation.
 271 Hythe, Mayor of. Corporation.
 272 Hythe, St. Bartholomew's Hospital. Corporation.
 273 Gravesend Town Seal. Corporation.
 274 Langdon Abbey. Matrix.
 275 Langdon Abbey.
 276 Langdon Abbey Counter Seal.
 277 Leeds Priory. Canterbury Cathedral.
 278 Leeds Priory Counter Seal.
 279 Leeds Priory. Chapter House.
 280 Leeds Priory Counter Seal.
 281 Leeds Priory. Aug. Off.
 282 Liesnes Abbey. British Museum.
 283 Liesnes Abbey Counter Seal.
 284 Liesnes Abbey. Canterbury Cathedral.
 285 Liesnes Abbey. Canterbury Cathedral.
 286 Liesnes, Mark, Abbot of. Canterbury Cathedral.
 287 Lydd Town Seal. Corporation.
 288 Lydd, Bailiffs of. Corporation.
 289 Lydd, Jurisdiction of the Archbishop. Corporation.

MAIDSTONE.

- 290 Town Seal. Corporation.
 291 Town Counter Seal. Corporation.
 292 Town Seal. Corporation.
 293 Town Seal. Corporation.
 294 Mayor. Corporation.
 295 Mayor. Corporation.
 296 College. British Museum.
 297 College Counter Seal.
 298 Grammar School.
- 299 Malling Abbey. Aug. Off.
 300 Margate Harbour. Corporation.
 301 Margate, Notary of.

- 302 Margate, Notary of.
 303 Motenden Hospital. Canterbury Cathedral.
 304 Ospringe Hospital. Temp. John. St. John's College,
 Cambridge.
 305 Ospringe Hospital. Eastbridge Hospital.
 306 Ospringe, Rural Dean of. Matrix.
 307 Ramsgate Harbour.
 308-9 Ramsgate Notary Seals.
 310 Otford, Hundred of.

ROCHESTER.

- 311 City Seal.
 312 City Counter Seal. Corporation.
 313 Mayor of. Corporation.
 314 Mayor of. Corporation.
 315 Mayor of. Corporation.
 316 Castle. Matrix.
 317 Abbey. 1106. Canterbury Cathedral.
 318 Abbey. Canterbury Cathedral.
 319 Abbey. Counter Seal. Canterbury Cathedral.
 320 Abbey. Canterbury Cathedral.
 321 Simon, Prior of. 1200. Canterbury Cathedral.
 322 Gundulph, Bishop of. 1077. Rochester Cathedral.
 323 Walter, Bishop of. 1147. British Museum.
 324 Gilbert, Bishop of. 1185.
 325 Benedict, Bishop of. 1226.
 325A Benedict's Counter Seal.
 326 Richard, Bishop of. 1238.
 327 Richard's Counter Seal.
 328 Richard, Bishop of, 1238.
 329 Laurence, Bishop of. 1268. British Museum.
 330 Walter, Bishop of. 1274. British Museum.
 331 Haymo, Bishop of. 1316. Merton College, Oxon.
 332 Haymo's Counter Seal.
 333 John, Bishop of. 1444. British Museum.
 334 John's Counter Seal. 1550. Aug. Off.
 335 Samuel, Bishop of. 1793.
 336 Palace. Matrix.
 337 Vicar General. Matrix.
 338 St. Bartholomew's Hospital.
 339 Watts's Charity.
 340 Bridge Seal. Matrix. Bridge House, Rochester.
 341 Bridge Seal. Corporation.
 342 Admiralty of. Corporation.
 343 Fishermen of. Corporation.

ROMNEY.

- 344 Town Seal. Matrix found at Dunwich.
 345 Town Seal. Corporation.
 346 Town Seal. Corporation.

52 CASTS OF SEALS (ROMNEY—WYE. CANTERBURY).

- 347 Mayor of. Corporation.
 348 Mayor of.
 349 St. Mary's in the Marsh. Corporation.
 350 St. Mary's in the Marsh. Corporation.
 351 St. Mary's in the Marsh. Corporation.
 352 St. Mary's in the Marsh. Corporation.
 353 Southerland Charity. Corporation.

- 354 Saltwood. Peculiar of. Matrix.

SANDWICH.

- 355 Town Seal. Matrix. Corporation.
 356 Town Counter Seal.
 357 Town Seal. Matrix.
 358 Town Seal. Corporation.
 359 Mayor of. Corporation.
 360 Mayor of. Corporation.
 361 Merchant Taylors of. Corporation.
 362 Grammar School of. Corporation.
 363 St. John's Hospital.
 364 St. John's Hospital.
 365 St. John's Hospital.
 366 St. John's Hospital.
 367 St. Bartholomew's Hospital. Canterbury Cathedral.
 368 St. Bartholomew's Hospital. Matrix.
 369 St. Bartholomew's Hospital.
 370 Customs, temp. Charles I.

- 371 Sevenoaks Grammar School. Matrix at the School.
 372 Shepey Nunnery of St. Sexburga.
 373 Strode Hospital. British Museum.
 374 Sutton Priory.
 375 Tonbridge Priory. British Museum.
 376 Tonbridge Grammar School.
 377 Tenterden, Town and Hundred of.
 378 Tenterden, Town Counter Seal.
 379 Tenterden, Mayor, etc., of.
 380 Tenterden, Mayor, etc., of.
 381 Tenterden, Mayor, etc., of.
 382 Wengford Abbey.
 383 Whitstaple, Dredgers of.
 384 Wye College. Chapter House.
 385

CANTERBURY.

- 386 John, Archbishop of. 1452.
 387 John, Archbishop of. 1486. New College, Oxon.
 388 William, Archbishop of. 1509. New College, Oxon.
 389 William's Signet. 1538. New College, Oxon.

- 390 Hugh Bartolf, Commissary of the Archbishop. 1329.
 391
 392 Thomas Bokington, Commissary of the Archbishop. 1427.
 New College, Oxon.
 393 William, Archdeacon of. 1524. St. John's Coll., Cambridge.
 394 Official of the Archdeacon of. 1317. St. John's College.
 395 Commissary for Visitations of the Archbishop. 1315. St.
 John's College, Cambridge.
 396 Court of Audience.
 397 St. Sepulchre's, Andrew de Kingston, Vicar of. St. John's
 College.
 398 Davington Priory, temp. Sara, Prioress of. S.D. St. John's
 College.
 399 Faversham, Thomas, Vicar of. St. John's College, Cambridge.
 400 Higham, Alicia Peckham, Prioress of. 6 Henry V. St.
 John's College.
 401 Maidstone.
 402 Rochester Priory Chapter Seal. 1363. St. John's College.
 403 Rochester. } Similar to 325 and 325A.
 404 Rochester. }
 405 Rochester, Thomas, Bishop of.
 406 Rochester, John Fisher, Bishop of.
 407 Rochester, Signet of Bishop Fisher.
 408 Rochester, John, Prior of. 48 Edward III. St. John's Col-
 lege, Cambridge.
 409 Rochester, John Strengge, Prior of. 20 Richard II. St.
 John's College, Cambridge.
 410 Rochester, Nicholas Metcalf, Archdeacon of. 1524. St.
 John's College, Cambridge.
 411 Alexander de Gloucester, temp. Henry III., on the Founda-
 tion of the Ospringe Hospital. St. John's College, Cam-
 bridge.
 412 Ospringe, Hugh, Chaplain of, fil. John de Wyle. S.D. St.
 John's College, Cambridge.
 413 Ospringe Maison Dieu, Roger Templarius, Almoner to the
 King and Master of. St. John's College, Cambridge.
 414 Ospringe, Robert, Master of the Maison Dieu, 5 Edward IV.
 St. John's College, Cambridge.
 415 Ospringe Maison Dieu, Master of, 7 Henry VIII. St. John's
 College, Cambridge.
 416 Ospringe Maison Dieu, John Underhyl, last Master of,
 7 Henry VIII. St. John's College, Cambridge.
 417 Canterbury, William Pilat. 1249.
 418 Canterbury, Richard Turney de. 1357. St. John's College,
 Cambridge.
 419 Edward Lord Cobham, 25 Henry VIII. St. John's College,
 Cambridge.
 420 Henry le Maister, de Faversham. St. John's College, Cam-
 bridge.

- 421 Robert de Stafford, fil. John Goddard de Faversham. St. John's College, Cambridge.
- 422 William de Langdon, fil. John. S.D. St. John's College, Cambridge.
- 423 Ospringe, Richard Garletot de. St. John's College, Cambridge.
- 424 Benedict, fil. Simon Pohun of Rochester. 10 Edward I.
- 425 Robert Muscegros de Whitstaple. S.D. St. John's College, Cambridge.
- 426 John de la Hore. 9 Henry VIII. Canterbury Cathedral.
- 427
- 428 Aymer, Earl of Kent.
- 429 Thomas, Earl of Kent
- 430 John, Lord Rokeby.
- 431 James Stuart, Sandwich.
- 432 Lansdown, Seal found at.
- 433 Gravesend, Seal found at.
- 434 Edward, Earl of Kent. 14 Edward II. Droitwich Corporat.
- 435 Margareta, Countess of Kent, 23 Edward III. Droitwich Corporation.
- 436 John, Earl of Kent, 24 Edward III. Droitwich Corporation.
- 437 John, Earl of Kent, 26 Edward III. Droitwich Corporation.
- 438 Elizabeth de Sevenoaks. (?)
- 439 Thomas de Holland. 27 Edward III. Droitwich Corporation.
- 440 Thomas de Holland. 30 Edward III. Droitwich Corporation.
-

LIST OF BOOKS IN THE SOCIETY'S LIBRARY.

- Airy, G. B.—*Essays on Invasions.*
 Akerman, J. Y.—*Coins of the Romans relating to Britain.*
 Angell, C. F.—*Account of St. Mary's Church, Sutton Valence.*
Antiquarian Tracts. 4 vols.
 Antiquaries and the Admiralty; Correspondence respecting the
 Tides in the Dover Channel.
 Baverstocke, J. H.—*Account of Maidstone.*
 Beesley, A.—*History of Banbury.*
 Belcher, W. D.—*Kentish Brasses.*
 Bible containing MS. of the Twisden Family, 1630.
 Bland, W.—*Principles of Agriculture.*
 Bland, W.—*Arches, Piers, and Buttresses.*
 Blore, E.—*Monumental Remains.*
 Bloxam, M. H.—*Sepulchral Monuments in Rochester Cathedral.*
 Bloxam, M. H.—*Glimpse at the Monumental Architecture and
 Sculpture of Great Britain.*
 Boutell, C.—*Heraldry.*
 Boyne, W.—*Trade Tokens of Yorkshire, 17th to 19th Century.*
 Brent, J.—*Canterbury in the Olden Time.*
 Britton, J.—*History and Antiquities of the Metropolitan Church
 of Canterbury.*
 Britton, J., and Brayley.—*Beauties of England and Wales.* 5 vols.
 Brooke, F. C.—*Sepulchral Memorials of the Cobham Family.*
 Bruce, J.—*Diary of John Manningham.*
 Burke, J. and J. B.—*Landed Gentry, with Supplement.*
 Burke, J.—*Extinct and Dormant Baronetcies.*
 Butler, R.—*Trim Castle.*
 Cass, F. C.—*South Mimms.*
 Cass, F. C.—*Monken Hadley.*
 Cass, F. C.—*East Barnet.*
 Catalogue of the Mayer Free Library.
 Catalogue of the Engraved Gems and Rings in the Mayer Col-
 lection.
 Catalogue of the Library of the Corporation of London, 1859, 1861.
 Catalogue of Portraits, Coins, Gems, etc., of the Corporation of
 London.
 Catalogue of Sculpture, Paintings, Engravings, etc., of the Corpora-
 tion of London.
 Catalogue of the Library in Faversham.
 Catalogue of National Portraits on Loan to the South Kensington
 Museum.
 Catalogue of Special Loan Exhibition.
 Caulfield, R.—*Seals of Irish Cathedral Churches.*
 Cave-Browne, J.—*History of All Saints', Maidstone.*
 Cave-Browne, J.—*The Story of Hollingbourne.*
 Charities in the County of Kent.
 Chester, J. L.—*Registers of Westminster Abbey.*

- Cook, G. A.—Topographical Description of Kent.
 Coote and Tyssen.—Ordinances of some Secular Guilds of London.
 Cowper, J. M.—Registers of St. Dunstan's, Canterbury.
 Cowper, J. M.—Registers of St. Alphage, Canterbury.
 Cowper, J. M.—Registers of St. George's, Canterbury.
 Cowper, J. M.—Registers of St. Mary Magdalene.
 Cowper, J. M.—Registers of St. Peter's, Canterbury.
 Cresy.—Stone Church, Kent.
 Cureton, W.—Spicilegium Syriacum.
 D'Alancourt, M.—L'Octavius de Minucius.
 De Vaynes, J. H. L.—The Kentish Garland. 2 vols.
 Dover and Cinque Ports. Records relating to.
 Duncan, L. L.—Registers of St. Mary, Lewisham.
 Dunkin, A. J.—Canterbury Cathedral Inscriptions.
 Dunkin, A. J.—A New History of Kent. 3 vols.
 Dunkin, A. J.—Monumenta Anglicana, Coggeshall.
 Dunkin, E. H. W.—Megalithic Remains, South Dorset.
 Ellis, W. S.—Antiquities of Heraldry.
 Ellis, W. S.—Notices of the Ellises.
 Evans, John.—Flint Implements of the Drift.
 Faussett, B.—Inventorium Sepulchrale.
 Faussett, T. G. G.—Canterbury till Domesday.
 Fitch, R.—Views of the Gates of Norwich.
 Fleming, A.—Account of Wm. Lambe, Citizen and Clothworker.
 Foster, J. E.—Diary of Samuel Newton.
 Franks, A. W.—London Tokens of 17th Century.
 Freeman, C.—History of Bromley.
 Freeman, E. A.—Historical Address at Cardiff.
 Furley, R.—History of the Weald of Kent.
 G. H. D.—Sigilla Antiqua. 1st and 2nd Series.
 Gill, H. S.—Devonshire Tokens of 17th Century.
 Gilbert, W. B.—Memorials of All Saints', Maidstone.
 Giraud, F. F.—Guide to Faversham.
 Golding.—Coinage of Suffolk.
 Gostling, W.—A Walk in the City of Canterbury.
 Guide to the Christy Collection.
 Gunn, J.—Rood Screen, Barton Turf. 2 vols.
 Halbertsma, J.—Lexicon Frisicum.
 Harris, J.—History of Kent, 1719.
 Harris, J.—History of Erith.
 Harvey, W.—Visitation of Norfolk.
 Haslewood, F.—MS. Supplement to the Antiquities of Smarden.
 Haslewood, F.—Antiquities of Smarden.
 Haslewood, F.—Parish of Benenden.
 Hasted, E.—History of Kent. 4 vols. folio.
 Hasted, E.—Dr. Drake's New Edition, Hundred of Blackheath.
 Henshall, Rev. Samuel.—Specimens and Parts of a History of South
 Britain, containing a History of the County of Kent.
 Henry, Jas.—Aeneidea. Vol. i.
 Hone, W.—Ancient Mysteries.

- Hovenden, Robert.—Registers of Canterbury Cathedral.
 Hovenden, Robert.—Extracts from Registers of Brith.
 Howard, J. J.—Visitations of Suffolk.
 Howard, J. J.—Miscellanea Genealogica et Heraldica. Vols. i., ii.
 Hudson, W.—Streets and Lanes of Norwich.
 Hughson, D.—Walks through London.
 Husenbeth, F. C.—Emblems of the Saints.
 Jacob, E.—History of Faversham.
 James, W. R.—Charters of Maidstone.
 Johnson, G. W.—Memoirs of John Selden.
 Kadwell, C.—Museum Tradescantianum (MS. facsimile).
 Kemble, J. M.—Sir Roger Twysden on the Government of England.
 Kent. Album of Drawings, Photographs, and Engravings presented to the Society by Members.
 Kent. Poll for the Knights of the Shire, 1791.
 Kent. Map of, 1769.
 Kent. Plans of the Hundreds of.
 Kent. Tracts, Deptford.
 Kent. Album of Kentish Worthies.
 Kent. Canterbury, Photographs of.
 Kent. Travellers' Companion, 1787.
 Kent. Topographical and Statistical Description.
 Kent. Acts of Parliament, Anne, George I., George II., relating to.
 Kilburne, R.—Topographie of Kent.
 Lambard, W.—Treatise of Peace.
 Landale, J.—Dartford Documents.
 Langueti, H.—*Epistolæ Politicæ et Historicæ*.
 Larking, L. B.—Heart Shrine in Leybourne Church.
 Larking, L. B.—Proceedings in Kent, 1640.
 Lower, M. A.—History of Sussex.
 Maidstone Borough, Ward List of.
 Marriott, W. Smith.—The Olden and Modern Times, with other Poems.
 Martin, C. Wykeham.—History and Description of Leeds Castle.
 Mayer, Jos.—A Library of National Antiquities.
 Mengs, A. Raphael. The Works of. 2 vols.
 Memorials of T. G. Godfrey Faussett.
 Memoirs of Sir Hugh Cholmley, Knt. and Bart.
 Museum, some Account of the Blackmore.
 Newton, W.—History of Maidstone.
 Nightingale, J. E.—Church Plate of Dorset.
 Norman, G. W.—Papers on Various Subjects.
 Norwood, J. D.—Edition of Robinson's Gavelkind.
 Packe, C.—Surface of the Earth.
 Papworth, J. W.—Ordinary of British Armoriais.
 Parish, W. D.—Domesday Book of Sussex.
 Parish, W. D.—Dictionary of the Sussex Dialect.
 Parker, J. H.—Archæology of Rome. 5 vols. (Aqueducts, Colosseum, Tombs, Mosaics, Catacombs.)

- Parker, J. H.—Architectural Antiquities of the City of Wells.
 Parker, J. H.—Glossary of Terms used in Gothic Architecture.
 Parker, J. H.—Introduction to Terms used in Gothic Architecture.
 Parsons, P.—Monuments and Painted Glass of One Hundred Churches mostly in Kent.
 Pearman, Rev. A. J.—History of Ashford.
 Pegge, S.—An Assemblage of Coins.
 Philipot's MS. Notes on Kentish Churches.
 Philipot, J.—Parts of the Visitation of Kent, 1619.
 Philipot, J.—Pedigree of the Family of Finch.
 Pickering, C.—Geographical Distribution of Animals and Plants.
 Pilbrow, J.—Discoveries at Canterbury.
 Pipe Roll Society. Vols. 1 to 13 (in progress).
 Pitt-Rivers, A. L. Fox.—Excavations in Cranborne Chase.
 Planché, J. R.—A Corner of Kent.
 Pocock, R.—History of Gravesend.
 Pretty, E.—Wetton's Guide to Northampton.
 Price, J. E.—On a Bastion of London Wall.
 Raven, Rev. J. J.—Church Bells of Cambridgeshire.
 Report on the Peabody Museum.
 Report of the Royal Commission on Historical Manuscripts.
 Report on Rugby School.
 Report on the Town of Faversham.
 Richardson, H. S.—History of Greenwich.
 Rochester.—Fisher's History of.
 Roscoe, W.—Life of Lorenzo de Medici.
 Rowles, W.—Kentish Chronologer.
 Rye, J. R.—Ancient Liberties of the Cinque Ports.
 Rye, W. B.—Etchings.
 Rye, W. B.—Pedes Finium (Cambridgeshire).
 Scientific Societies.—Year Book. 1887.
 Scott, Sir G. G.—Guide to the Royal Architectural Museum.
 Scott, J. R.—Memorials of the Family of Scott of Scott's Hall.
 Selby, W. D.—Norfolk Records. Vol. i.
 Shipley, O.—Studies in Modern Problems.
 Shortt, W. T. P.—Collectanea Curiosa Antiqua Dunmonia.
 Shortt, W. T. P.—Sylva Antiqua Iscana.
 Smallfield, J. S.—London Tokens, 17th Century.
 Smallfield, J. S.—List of Kentish Trade Tokens, with MS. notes.
 Smith, C. Roach.—Rural Life of Shakespear.
 Smith, C. Roach.—Retrospections, Social and Archæological. 3 vols.
 Smith, C. Roach.—Richboro, Reculver, Lymne, and Pevensay.
 Smith, C. Roach.—Memoir of M. de Caumont.
 Smith, C. Roach.—Roman Villa at Hartlip.
 Smith, C. Roach.—Catalogue of his Museum.
 Smith, C. Roach.—Collectanea Antiqua. Vol. vii. (3 parts).
 Smith, Archdeacon C. J.—History of Erith.
 Smith, Alfred.—Blackmore Museum.
 Smith, H. Ecroyd.—Catalogue of the Library of the Historic Society of Lancashire and Cheshire.

- Smith, J. Russell.—*Bibliotheca Cantiana*.
 Somner, W.—*A Treatise of Gavelkind*.
 Sparvel-Bayly, J. A.—*Historical Notes of Dartford*.
 Sprott, Thos.—*Chronicle of Profane and Sacred History*.
 Stahlschmidt, J. C. L.—*Church Bells of Kent*.
 Sternberg, T.—*Dialect and Folk-lore of Northamptonshire*.
 Sternhold.—*The whole Book of Psalms*. 1601.
 Streatfeild, T.—*Excerpta Cantiana*.
 Stuart, J.—*Records of the Priory of the Isle of May*.
 Twopeny, W.—*Specimens of Ancient Woodwork*.
 Tymms, S.—*The East Anglian*.
 Tyssen, Amherst Daniel.—*Church Bells of Sussex*.
 Tyssen, Amherst Daniel.—*Goods and Ornaments in the Churches of Surrey*.
 Vaillant, J.—*Numismata Imperatorum*.
 Vincent, W. T.—*Records of the Woolwich District*. 2 vols.
 Weever, J.—*Ancient Funeral Monuments*.
 Whichcord, J.—*History of All Saints', Maidstone*.
 Willard, J.—*Anniversary Address, Incorporation of Lancaster, Massachusetts*.
 Willard, J.—*Memoir of Major Simon Willard*.
 Willement, T.—*Heraldic Notices of Canterbury Cathedral*.
 Willement, T.—*Parish and Priory of Davington*.
 Willis, R.—*Architectural History of the Monastery of Christchurch, Canterbury*.
 Winter, C. J. W.—*Rood Screen at Randworth*.
 Wright, G.—*Archæologic and Historic Fragments*.
 Wright, T.—*Uriconium*.
 Wright, T.—*Feudal Manuals of English History*.
 Wright, T.—*Vocabularies*.
-

N.B.—*For the TRANSACTIONS OF ARCHÆOLOGICAL SOCIETIES see next page.*

60 LIST OF BOOKS (SOCIETIES' TRANSACTIONS).

PUBLICATIONS OF ARCHÆOLOGICAL SOCIETIES IN UNION WITH
THE KENT ARCHÆOLOGICAL SOCIETY.

- Archæologia.—Vols. xlv. to lii.
 Archæologia Æliana.—Vols. i. to xv., 8vo. 4to, vol. iii.
 Archæologia Cantiana.—Vols. i. to xviii.
 Antiquaries of London, Proceedings of the Society of.—Vols. i. to
 xiii. 2nd Series.
 Antiquaries of Scotland, Proceedings of the Society of. 1st Series,
 12 vols. 2nd Series, Vols. i. to xi.
 Archæological Journal (Royal Archæological Institute).—Vols. i. to
 xx., and xxiii. to xxxvii., xl. to xliii.
 Associated Architectural Societies' Reports.—16 Vols. from 1850.
 British Archæological Association.—Vols. i. to x., and xxxiii. to xlvii.
 British Archæological Association, Worcester Congress, 1846.
 Bristol and Gloucester Society.—Vols. i. to xiv.
 Cambridge Society.—Vols. ii. to iv.
 Cumberland and Westmorland Society.—Vols. vi. to xi.
 Derbyshire Society.—Vols. v. to xiii.
 Ecclesiologist.—Vols. i. to xxvi.
 Ireland, Proceedings of the Royal Society of Antiquaries of.—Vols.
 viii., ix., Fourth Series. Vol. i., Fifth Series.
 Irish Academy, Royal.—Vols. xxvi. to xxix. 4to. Vols. iii. to iv. 8vo.
 Irish Academy, Royal. The Calendar of Oengus.
 Irish Academy, Royal. Cunningham Memoirs.
 Kilkenny Society.—14 Vols. from 1852.
 Lancashire and Cheshire Society. Vols. i. to xli.
 London and Middlesex Society.—Vols. i. to vi.
 Montgomeryshire Society.—Vols. viii. to xi., xviii., xxi., xxiii. to xxv.
 Norfolk Society.—Vols. i. to xi.
 Norfolk Society.—Visitation of Norfolk. Vol. i.
 Norfolk Society.—Norfolk Records.
 Numismatic Chronicle.—Vols. i. to xiii. and from 1879 onwards.
 Shropshire Society.—Vol. i., Second Series.
 Shropshire Society.—A Calendar of Wills (Shropshire).
 Smithsonian Institute.—1867 to 1886.
 Somersetshire Society.—Vols. i. to xxxviii.
 Suffolk Society.—Vols. i. to vii.
 Surrey Society.—Vols. i. to x.
 Sussex Society.—Vols. ii., vi. to xxxvii.
 Sussex Society.—Index to Vols. i. to xxv.
 Wiltshire Society.—Vols. i. to xxv.

These Works are in progress.

FOREIGN WORKS.

- Antiquaires de L'Ouest.—Mémoires de la Société des. 1857.
 Caumont, M. de.—Histoire de l'Architecture Religieuse au Moyen
 Age.
 Chazaud, M.—Fragments du Cartulaire de La Chapelle Aude.
 Dunkerquoise.—Mémoires de La Société. Vols. vi., vii., x. to xvii.
 Émulation D'Abbeville.—Société. 1844 to 1848.
 Émulation du Dep. de L'Allier.—Bulletin de La Société d'.
 Tomes i. to viii.
 France.—Congrès Archéologique de. 1859, 1860, 1868, 1870.
 Halbertsma Justus.—Lexicon Frisicum.
 Lieblin, J.—Recherches sur la Chronologie Egyptienne.
 Munch, P. A.—Kong Olaf Tryggvesöns Saga.
 Nord.—Société Royale des Antiquaires du. 1840 to 1860.
 Picardie.—Bulletins de La Société des Antiquaires de. Tome xiii.
 1877 to 1879.
 Picardie.—Mémoires de La Société des Antiquaires de. Tome vi.
 Romana.—Archivio Della Società Romana Di Storia Patria.
 Vols. iii. to v., viii. to xiv.
 Saga Olafs Konungs den helliges.
 Unger, C. R.—Postolo Sögur.
 Unger, C. R.—Heilagra Manna Sögur. Vols. i., ii.
 Unger, C. R.—Thomas Saga Erkibyskups.
-

PLASTER CASTS, BY GIOVANNI LIBEROTTI,
OF
ANTIQUÉ AND MODERN GEMS, MEDALLIONS, ETC.

- | | | | |
|----|------------------------------------|----|---|
| 1 | Fortune. | 45 | A wise mother's education. |
| 2 | Gladiator. | 46 | Terpsichore. |
| 3 | Niobe. | 47 | The Innocents. |
| 4 | Venus. | 48 | Venus, Mercury and Cupid. |
| 5 | Venus with a Dolphin. | 49 | The Triumph of Alexander. |
| 6 | Augustus. | 50 | Bellerophon. |
| 7 | Antinous. | 51 | The Cumæan Sybil. |
| 8 | The Graces. | 52 | Hercules capturing a bull. |
| 9 | The She Wolf. | 53 | Hector reproving Paris |
| 10 | The Graces. | 54 | Dancing Girl. |
| 11 | Woman selling Cupids. | 55 | Psyche. |
| 12 | The Persian Sybil. | 56 | Canova's Palamedes. |
| 13 | The Doves. | 57 | Cleopatra. |
| 14 | Mercury. | 58 | Apollo. |
| 15 | Solomon's Judgment. | 59 | Hercules with Nemeæan
Lion. |
| 16 | Bacchus and Ampelos. | 60 | Medusa. |
| 17 | The Rape of Proserpine. | 61 | Raphael's Galatea. |
| 18 | Jupiter and Ganymede. | 62 | Venus Victrix. |
| 19 | Fortune. | 63 | Cupid. |
| 20 | Marcus Aurelius. | 64 | Andromeda and Perseus. |
| 21 | Vulcan. | 65 | Cupid and Pegasus. |
| 22 | Dancing Girl. | 66 | Lion. |
| 23 | Canova's Magdalene. | 67 | Hercules and Lycas. |
| 24 | Dancing Girl. | 68 | Lion. |
| 25 | The Barberini Lion. | 69 | Dying Gladiator. |
| 26 | Cupid breaking his bow. | 70 | Marcus Agrippa. |
| 27 | Mercury, Orpheus, and
Burydice. | 71 | Castor. |
| 28 | Quoit Thrower. | 72 | Antinous. |
| 29 | Day (Thorwaldsen). | 73 | Mars reposing. |
| 30 | Theseus. | 74 | Artemisia with the ashes of
Mausolius. |
| 31 | Night (Thorwaldsen). | 75 | Ajax. |
| 32 | Flora. | 76 | Guido's Beatrice Cenci. |
| 33 | The Farnese Hercules. | 77 | Antinous. |
| 34 | Iphigenia. | 78 | Agrippina. |
| 35 | The birth of Jupiter. | 79 | Car of Venus. |
| 36 | Conquest of Dacia. | 80 | Jove and Cupid. |
| 37 | Venus Calipygia. | 81 | Air (Thorwaldsen). |
| 38 | Venus de Medici. | 82 | The birth of Diana. |
| 39 | Drunken Faun. | 83 | Cleopatra supplicating Au-
gustus. |
| 40 | Wounded Amazon. | 84 | Water (Thorwaldsen). |
| 41 | Dido abandoned. | 85 | Car of Victory. |
| 42 | Holy Family. | 86 | Antinous. |
| 43 | Justice. | | |
| 44 | Charity. | | |

- | | | | |
|-----|--|-----|---|
| 87 | The Phrygian Sybil. | 130 | Hermaphrodite. |
| 88 | Marcus Brutus. | 131 | Flora. |
| 89 | Psyche in sadness and
Cupid turning from her. | 132 | Cleopatra. |
| 90 | Earth (Thorwaldsen). | 133 | Lucius Papinius. |
| 91 | Aurora. | 134 | The Saviour (after Cor-
reggio). |
| 92 | Guido's Magdalene. | 135 | The teaching of Jove. |
| 93 | Hector. | 136 | Canova's Hebe. |
| 94 | Fire (Thorwaldsen). | 137 | Hercules. |
| 95 | Holy Family (Thorwald-
sen). | 138 | Centaur in love. |
| 96 | Canova's Terpsichore. | 139 | Farnese Bull. |
| 97 | Modesty. | 140 | The Graces. |
| 98 | The Laocoon. | 141 | Œdipus on Mount Cithæro. |
| 99 | Priam asking Achilles for
the body of Hector. | 142 | Urania. |
| 100 | Jove and Aquila. | 143 | Agrippina with the ashes of
Germanicus. |
| 101 | Jesus blessing children. | 144 | Nessus and Deianeira. |
| 102 | A Seer. | 145 | Guido's Aurora. |
| 103 | Aristides. | 146 | Glory (Thorwaldsen). |
| 104 | St. George and Dragon. | 147 | St. Michael the Archangel. |
| 105 | Cain and Abel. | 148 | Ariadne. |
| 106 | Bacchus defeats Love. | 149 | Endymion. |
| 107 | Guardian Angel. | 150 | Venus carried by a Zephyr. |
| 108 | Apollo and Daphne. | 151 | Lamentation of Achilles on
the death of Patroclus. |
| 109 | Triton. | 152 | Apollo. |
| 110 | Venus. | 153 | Rome triumphant. |
| 111 | Love's revenge. | 154 | Antinous. |
| 112 | Venus de Medici. | 155 | Bacchante. |
| 113 | Raphael's Madonna del la
Seggia. | 156 | Venus and Cupid. |
| 114 | Melpomene. | 157 | Jove. |
| 115 | The Last Supper (after
Leonardo da Vinci). | 158 | Paris. |
| 116 | Dancing Faun. | 159 | Milo. |
| 117 | Achilles. | 160 | Venus. |
| 118 | Fight between Centaurs
and Lapithæ. | 161 | Fidelity. |
| 119 | Aurora. | 162 | Raphael's Madonna di San
Sisto. |
| 120 | Apollo. | 163 | Perseus. |
| 121 | Cupid and Psyche. | 164 | Cupid and Psyche. |
| 122 | Sappho. | 165 | Hercules. |
| 123 | Apollinus. | 166 | Venus and Cupid. |
| 124 | Minerva. | 167 | Marriage of Aldobrandino. |
| 125 | Seneca bleeding to death. | 168 | Lion and Horse. |
| 126 | Polyhymnia. | 169 | Venus. |
| 127 | A son of Laocoon. | 170 | Pan and Goat. |
| 128 | Zechariah the prophet
(after Michael Angelo). | 171 | Jove Serapis. |
| 129 | Dancing Girl. | 172 | Cupid and Psyche. |
| | | 173 | Homer. |
| | | 174 | Jove and Ganymede. |
| | | 175 | Faun and Nymph. |

176	Cupid on a sea calf.	190	The Author.
177	Julius Cæsar.	191	The lovers' meeting.
178	Spring (Thorwaldsen).	192	Jove.
179	The Cumæan Sybil.	193	Winter (Thorwaldsen).
180	Cupid and Psyche.	194	Lucius Verus.
181	Leander and Hero.	195	Wild Boar.
182	Summer (Thorwaldsen).	196	Venus.
183	Bacchante carried off by a Centaur.	197	Æsculapius.
184	Hercules and Hebe.	198	Apollo Belvidere.
185	Helen.	199	Happiness.
186	Meleager.	200	Pericles.
187	Autumn (Thorwaldsen).	201	Public Beneficence.
188	Ulysses.	202	Adonis.
189	Genius.	203	Canova's Napoleon.
		204	St. Cecilia.